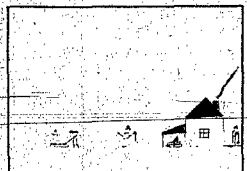


Thursday

JANUARY 22, 1987
WAYNE, NEBRASKA 68787
ONE HUNDRED NINTH YEAR

NUMBER THIRTY-ONE

25¢ THIS ISSUE
TWO SECTIONS, 20 PAGES



Extended Weather Forecast:
Friday through Sunday, little if any precipitation; highs, 20 Friday, warming to mid to upper 30s Sunday; lows, 0 Friday, moderating to teens Sunday.

Spencer
Age 9
Laurel-Concord

The cheerleaders from the schools of Allen, Laurel, Wakefield, Wayne and Winside are featured in this week's sports section.

See page 10a for pictures.



THE WAYNE HERALD



JIM MARSH OF The Wayne Herald helps Hazel Roberts of Wayne pull out the first two names in the "4,000 Reasons to Shop Wayne" contest.

For vacation trip

First two finalists named

Mr. and Mrs. Tom Serbick of South Platte and Kevin Echtenkamp of Wayne were the first two names drawn in the "4,000 Reasons To Shop Wayne" contest sponsored by The Wayne Herald and 53 other participating businesses.

The Serbicks and Echtenkamp are two of 16 people who will be eligible in a drawing for a dream vacation trip for two to either Florida; Aspen, Colorado; Las Vegas; Phoenix; Bermuda; Hawaii; or a boat cruise through the Virgin Islands.

Two more names will be drawn during each of the upcoming seven weeks to fill out the list of 16 names eligible for the vacation trip. The next drawing will

take place on Tuesday, 10 a.m. at Daylight Donuts.

Contestants must re-register for the Tuesday, Jan. 27 drawing because the rules of the contest state that after each drawing, all the names are discarded.

Since neither the Serbicks or Echtenkamp entered their names on the special advertisements published in the Thursday, Jan. 15 edition of The Wayne Herald, they are not eligible to receive a bonus of the five-piece luggage set if their name is drawn for the grand prize of the vacation trip.

The second name drawn among the 16 finalists will receive \$1,000 in "vacation bucks" to be spent at any of the participating stores.

Why option voted down, why passed Local sales tax issue reviewed

By Chuck Hackenmiller
Managing Editor

margin, 5,012 to 1,919.

The local sales tax option was a risk worth taking, according to Michael Nolan, current city administrator of Norfolk.

After Norfolk voters handily defeated the first attempt in 1980 to pass a local sales tax option, a vote on the issue took place again in November, 1984 — and this time the measure was approved by a 59 percent to 41 percent margin.

The Wayne Herald contacted Nolan for more information and insight on the local sales tax option because of the recent interest of the issue in the city of Wayne.

At the last Wayne city council meeting, the Wayne Area Chamber of Commerce Board of Directors requested the city council to consider placing a 1½ percent local sales tax option issue before the city voters.

The Chamber Board asked that the council consider dedicating 1 percent of the proposed local sales tax to property tax relief and ½ percent to economic development.

Nolan sent The Wayne Herald an article he had written in the December 1986 Nebraska Municipal Review publication.

One reason the sales tax option failed to pass in 1980, Nolan believed, was because the message on the option was not communicated effectively. The voters didn't believe the sales tax would really be used to reduce municipal property taxes.

He said in the article that no effort had been made to rally a group of local citizens to support and advocate approval of the sales tax.

The opposition from the rural area emphasized that local sales tax to non-resident farmers would be taxation without representation; farmers would shop in other communities; and property tax reduction would not be guaranteed.

SINCE ITS enactment (in April of 1985), Nolan wrote that Norfolk's local sales tax option has replaced "dollar for dollar" \$1,490,063 of municipal property tax.

The Nebraska Tax Research Council 25-City Tax Study: 1986 Fiscal Year indicates that Norfolk's property tax levy of \$1.66136 per \$100 is the lowest consolidated tax rate in the state, and that Norfolk is the only large community with a consolidated property tax rate less than \$2 per \$100.

Currently in Nebraska, three municipalities are authorized to collect local sales tax of 1½ cents, 16 are authorized to collect 1 cent and one is authorized to collect a half-cent.

Nebraska Department of Revenue Sales and Use Tax Regulations mentions that any incorporated municipality may impose a local sales and use tax set at the rate of ½ percent, 1 percent or 1½ percent.

The tax "must be approved by a majority of the votes cast in a regular election held within the municipality," according to the regulations. The local sales and use tax would be collected and administered by the State Tax Commissioner and remitted to the adopting municipality.

Lexington, with a population of about 7,000, is a Nebraska city that had a local sales tax option voted down in November, 1986's general election. Bill Podraza, Lexington city manager, said the local sales tax option, designed specifically for industrial and economic development, was defeated by 42 votes.

strong opposition to the sales tax option. Also, there was considerable uncertainty among the voters as to how the money might be spent, Podraza mentioned.

Taxes were a big issue in the November general election, such as the state ballot regarding the school consolidation bill (662), he said, which may have also been a factor. No "last ditch effort" was made in support of the local sales tax option.

Despite the local sales tax rejection, Podraza said Lexington will not be discouraged in the search for greater economic development in the community.

A 1 cent sales tax option was also defeated in Papillion last November.

Jan Beal, city manager, said the vote there was close — nearly 52 percent for the sales tax option while about 47 percent voted against it.

One important key to passage of the sales tax option, she said, is to have a community organization, other than members of city government, actively involved in supporting the local sales tax option.

A bill has been introduced in the 1987 State Legislature by State Senator Loran Schmit of Bellwood that would permit counties to levy up to 1 percent in a sales tax that would be collected by the state. Twenty-two of Nebraska's 93 counties have tax rates of more than 45 cents for \$100 of assessed value — with the maximum allowed being 50 cents for \$100 of assessed value.

With the decline in federal revenue sharing and lowering of farm values across the state, it is predicted that more counties will be approaching, or exceeding the 50 cent limitation.

THE FARM COALITION provided

City	Pop.	Tax Option	Enacted
Omaha	327,554	1½%	Nov. 1969
Lincoln	171,932	1½%	Jan. 1970
Bellevue	32,145	1½%	Jan. 1979
North Platte	24,509	1%	April 1979
Lawellen	368	1%	Oct. 1980
Ogallala	5,638	1%	Oct. 1980
Sidney	6,010	1%	Oct. 1980
Gordon	2,245	1%	Oct. 1982
Kimball	3,120	1%	Oct. 1982
Oshkosh	1,057	1%	Oct. 1982
Rushville	1,217	1%	Oct. 1982
Chapell	1,095	1%	April 1983
Chadron	5,933	1%	Oct. 1984
LaVista	9,588	1%	April 1985
Norfolk	19,449	1%	April 1985
Nebraska City	7,127	1%	Oct. 1986
*Beatrice	12,891	1%	April 1987
*Crawford	1,315	1%	April 1987
*Crete	4,872	1%	April 1987
*Gothenburg	3,479	1½%	April 1986

* Approved by voters in the November 1986 general election. The local sales tax option was voted down last November in Alliance (pop. 9,032); Cassola (4,453); Lexington (7,040); Papillion (7,725); Waverly (3,736); and York (7,722).

Rocket demonstration scheduled Science workshop planned

Lasers, rockets and robots headline the Northeast Nebraska Junior Academy of Science at Wayne State College of Nebraska Saturday, Jan. 24.

Bob McCue, associate professor of biology at Wayne State, expects about 350 students from 30 junior and senior high schools to participate in the annual event. Workshops ranging from astronomy to sharks are slated.

"Some sessions will be demonstrations, while in others students will get hands-on experience," said McCue. "The number of students in each group will depend on whether or not it is demonstrative." McCue added that several Wayne State students will act as assistants in many of the

workshops.

"The workshops are designed to provide motivational activities for students and create a professional setting for teachers to share teaching ideas," said Ed Broglio, science chairman and a teacher at Laurel Public School.

FOR ELEMENTARY and secondary school teachers, Project WILD appears on the day's activities. Project WILD, sponsored by the Nebraska Game and Parks Commission and in its second year at the Academy of Science, is an education program emphasizing awareness, appreciation and understanding of wildlife and natural resources. It can

be used to teach basic skills not only in science, but social studies, language arts, math, art, music and physical education.

Project WILD teaches young people how to think about wildlife, not what to think. "It's designed to get teachers and kids working together in environmental areas," said McCue. "This is the first year that students will be involved."

Tentatively scheduled to speak is an information specialist from NASA's lab in Mississippi, the site of testing for the Space Shuttle's main engine.

Concluding the day is a special rocket demonstration by Orville Carlisle and Estes Rockets.

Natural gas rates decrease

Natural gas rates for Peoples Natural Gas customers in Wayne are now over 14 percent lower than last winter at this time.

In addition to lower rates, this winter's warm weather has also kept heating bills down.

Tim Connealy, district manager of Peoples, said this winter's lower rates are a result of decreases in the cost of natural gas supplies which Peoples buys to serve Wayne customers.

"The latest decrease, which customers are receiving this month, has reduced the rate for residential

customers approximately 0.73 cents per hundred cubic feet (Ccf)," Connealy said.

"During the past year, we've seen numerous rate decreases resulting from competition brought about by the new federal regulations which are dramatically changing the natural gas industry," he said.

He said local distribution companies such as Peoples now have the option of purchasing natural gas supplies either from the traditional pipeline supplier or from other sources. "We keep our customers in mind by seeking the best value when

purchasing natural gas supplies," explained Connealy.

"With this purchasing flexibility and the current abundant supplies of natural gas, the laws of supply and demand have allowed natural gas prices to come down," he said.

"Although we expect natural gas rates to continue to fluctuate more frequently in today's market, we are pleased that the overall trend is downward which certainly is a benefit to our customers," he added.

Peoples provides retail natural gas service for about 6,400 residential, commercial and industrial customers in the Wayne area.



Photography: Chuck Hackenmiller

Helping out nature

PAM BOEHLE'S students at St. Mary's recently participated in a 4-H Classroom Enrichment Project. Their program was on "bird behavior." Last week the class hung bird food on branches of a tree near the school as part of the project.

obituaries

Mildred Rahn

Mildred Rahn, 88, of San Diego-Calif., formerly of Allen, died Friday, Jan. 16, 1987 in San Diego after a long illness.

Services were held Tuesday, Jan. 20 in the Mohr Funeral Home in Ponca. The Rev. Nile Buch officiated.

Mildred Caroline "Mille" Kingston was born Aug. 20, 1928 in Allen. She married Roy Rahn on Dec. 4, 1948 at Martinsburg. The couple lived in Sioux City until 1952 when they moved to California.

Survivors include her husband; one son, Bobby Kingston of Reno, Nev.; one brother, Clarence Kingston of Winton, Calif.; and one sister, Mrs. Bob (Madge) Saunders of Merced, Calif.

Burial was in the Silver Ridge Cemetery.

Muriel Noe

Muriel Noe, 77, of Waterbury died Friday, Jan. 16, 1987 in a Sioux City hospital after a long illness.

Services were held Tuesday, Jan. 20 in the Becker-Hunt Funeral Home in South Sioux City. The Rev. Glenn Juett officiated.

Muriel Marie Chickney Noe was born April 17, 1909 in Venus. She attended Inman School and Wayne State College. She married Donald D. Noe on Sept. 2, 1936 at Center. She taught school in the Waterbury area, retiring in 1974. She was a charter member of the Waterbury Union Church and was past president of the Mission Society. She was a past president of the Retired Teachers Association and Dixon County Historical Museum.

Survivors include her husband; one son, Lt. Col. Wilmer Noe, stationed in Stuttgart, Germany; one daughter, Mrs. Steve (Gayle) Sturgeon of South Sioux City; one sister, Wilmer Goodin of Okmulgee, Okla.; and two grandsons.

Burial was in the Eastview Cemetery in Allen.

Oscar 'Ock' Koester

Oscar "Ock" Koester, 79, of Allen died Saturday, Jan. 17, 1987 at the Pender Community Hospital.

Services were held Wednesday, Jan. 21 at the First Lutheran Church in Allen. The Rev. Duane Marburger and Missionary Eldon Duart officiated.

Oscar John Koester, the son of Gerhard and Mathilda Wessel Koester, was born March 21, 1907 at Allen. He attended rural and public school in Allen and helped on his parents' farm. He married Erma Wheeler on Dec. 22, 1928 at Sioux City. The couple farmed northeast of Allen until 1972 when they retired and moved into Allen. He also was an auctioneer and real estate representative. He served on civic boards including the school board, fire district board and the Allen-Elevator board. He was a Senior Citizens organizer and a member of the First Lutheran Church where he served on the council and in other capacities. He was involved with 4-H and the Allen Saddle Club.

Survivors include his wife; two daughters, Mrs. Gil (Helen) Lujan of Richland, Wash. and Mrs. Merle (Janet) Paulsen of Woodbridge, Va.; one son, Norman of Council Bluffs, Iowa; one brother, Paul of Allen; four sisters, Sophie Lockwood, Mrs. Marvin (Martha) Mortenson and Mrs. Dale (Helen) Anderson; all of Wakefield and Mrs. Wallace (Patience) Isom of Duvall, Wash.; 12 grandchildren; and six great grandchildren.

He was preceded in death by one infant son and two brothers, Herbert and George.

Palbearers were Wade Ellis, Rex Koester, Dennis Koester, Jody Ellis, Douglas Koester and John Stephens.

Burial was in the Eastview Cemetery with the Bressler-Humlicek Funeral Home in Wakefield in charge of arrangements.

Forrest Jose

Forrest Jose, 73, of rural Pender, died Friday, Jan. 16, 1987 at the Pender Community Hospital.

Services were held Monday, Jan. 19 at the Wakefield Presbyterian Church. The Rev. Rick Kargard officiated.

Forrest George Jose, the son of James and Molly Rogge Jose, was born June 8, 1913 at Douglas. He attended school at Douglas. He married Helen Jeanette Block on Aug. 28, 1940 at Rockport, Mo. He grew up on his parents' farm in Douglas. After his marriage in 1940, he farmed in Gage and Oto Counties until 1958. In 1960 he was employed by John Schroeder Implement as farm equipment salesman in Wakefield until 1964 when he moved to Randolph where he owned and operated a cafe. He moved back to his present residence and worked for the Pender Dairy until his retirement in 1972.

Survivors include his wife, Helen of rural Pender; two daughters, Mrs. Robert (Karen) Stiles of Jacksonville, Fla. and Mrs. Bill (Nancy) Kinney of Wakefield; six grandchildren; one great grandchild; two sisters, Mrs. Evelyn Rowe of Ellioth, Iowa and Mrs. Eldon (Esther) Mitzner of Nebraska City; and four brothers, Wilbur of Eston, Saskatchewan Canada, Willard of Nebraska City, Fay of Plattsmouth and Everett of Crete.

Palbearers were Barry Jose, Al Konfrst, Karl Znamenacek, Ronald Jose, Dean Boeckenhaur and Roger Anderson.

Burial was in the Wakefield Cemetery with Harlan Thompson of the Bressler-Humlicek Funeral Home in charge of arrangements.

Harry Hokamp

Harry Hokamp, 87, died Friday, Jan. 9, 1987 at Malvern, Ark.

Services were held Thursday, Jan. 15 at the Methodist Church in Gering. Harry Herman Hokamp, the son of John Henry and Anna Reitmeyer Hokamp, was born Sept. 21, 1899 at Laurel. He received his early education there. He graduated from Boyles Telegraph and Business College at Omaha in 1924 and joined the Union Pacific Railroad, where he was employed in various capacities, retiring Jan. 1, 1970, after 45 years of service. He married Anna Hillyard on June 17, 1927 and lived and worked at South Mitchell for 15 years. They moved to Gering in 1944 and had lived there since.

Survivors include one daughter, E. Jane and Lynn Keim of Hot Springs, Ark.; one grandson, Kent and Kathy Keim of Champaign, Ill.; one great grandson, Lee Keim.

He was preceded in death by his wife Anna, three brothers and two sisters.

Duane Andrews

Duane Andrews, 61, of Menomonee Falls, Wis., formerly of Allen, died Thursday, Jan. 8, 1987 in Menomonee Falls after a long illness.

Memorial services were held at the Bressler-Humlicek Funeral Home in Wakefield. The Rev. Joe Marek officiated.

Duane Andrews graduated from Allen High School in 1943. He served in the Philippines and Japan during World War II. He worked with the Chicago Northwestern Railroad at Menomonee Falls. On May 27, 1967, he married Viola Miesel in Boone, Iowa.

Survivors include his wife; one sister, Mrs. Jim (Helen) Brown of Emerson; three step children; and three step grandchildren.

Marie Kvols

Marie Kvols, 94, of Laurel, died Monday, Jan. 19, 1987 at Laurel.

Services will be held Thursday, Jan. 22 at 10:30 a.m. at the United Lutheran Church in Laurel. The Rev. Kenneth Marquardt will officiate.

Marie P. Kvols, the daughter of Peder and Anna Christiansen, was born Dec. 1, 1892 at Nykøbing Mors, Denmark. She was orphaned at the age of nine and was raised by an aunt. She came to the United States in 1912. She married Jens "Nick" Kvols on April 1, 1914 at Sidney, Mont. The couple lived and farmed in the Carroll and Laurel areas until 1957 when they moved into Laurel. She was a member of the United Lutheran Church, the Ladies Aid and had taught Sunday school for many years.

She was concerned with the welfare of her neighbors and was always there with a helping hand in times of trouble. In addition to her own family, she was a mother to several nephews who had come from Denmark.

Survivors include two sons, Morris and Jens, both of Laurel; one daughter, Dorothy Thomas of Duluth, Minn.; 14 grandchildren; 39 great grandchildren; and nephews and nieces.

She was preceded in death by her husband, Nick in 1969; one son, Eugene; her parents; three brothers and two sisters.

Palbearers will be Roger Kvols, Rod Kvols, Jim Kvols, Tom Erwin, Dick Schmitz, Bill Zechmann, Darrell Macklin and Bill Jensen.

Burial will be in the Laurel Cemetery in Laurel with McBride-Wiltse Mortuary in charge of arrangements.

For NRD director post

Nominations sought

Dale Jackson, Allen, director and conservationist has fulfilled his term for the Lewis and Clark NRD and been elected to a position on the Allen School Board.

The NRD Board is now in the process of determining a replacement for the elected office, which term runs until the end of 1990. The official process involves accepting nominations from the Board directors in the sub-district being served as well as soliciting nominations from the public by news articles.

The rest of the NRD Board then reviews the names submitted and appoints a new representative.

The sub-district #8, which Jackson has served for four years includes roughly an area of the Lewis and Clark NRD in Dixon County, north and east of Allen, up to and including Martinsburg and Waterbury as well as Daily Township.

Interested persons wishing to nominate someone for this position should submit the names along with qualifying information on the individual to the NRD District Office in Hartington by Feb. 12.

The appointment will be considered at the Feb. 19 NRD meeting.

McCright injured in auto mishap

Tom McCright of Wayne was injured Saturday afternoon in a one-vehicle accident near the junction of Highway 116 and 20 in Dixon County.

The accident happened about a mile east of the junction. The van he was driving rolled into a steep ditch at that location. He was the lone person in the vehicle.

McCright was taken to Marian Health Center of Sioux City where he was reported Wednesday morning to be in serious condition.

The accident was investigated by the Nebraska Highway Patrol.

vehicles registered

1974: Dave Bloomfield, Carroll, GMC Pu.

1973: Scott Olson, Wayne, Cad., Debra Starzl, Wayne, Olds.

1972: Wayne Denklau, Jr., Wayne, Chev.; Dennis Schmolli, Wayne, Pontiac.

1971: Darrel Walton, Wayne, Chev. Pu; Marco Galick, Wayne, Ford Pu.

1970: Don Beggerstaff, Wayne, Olds; Robert Staub Jr., Hoskins, Chev.

county court

Traffic fines

Craig Tiedtke, Wayne, improper parking, \$5; Michael D. Ellis, Windsor, Minnesota, speeding, \$25; Steven C. Overin, Clarinda, speeding, \$10.

Small Claims filing

Dallas Brandt, d/b/a County Repair against Larry Lindsay d/b/a Wayne Auto Parts, \$1,148, for engine repair.

Wayne Dental Clinic, Wayne, against Russell Eschlinman, Wayne, \$66.17, amount owed.

Merlound M. Lessmann, Wayne, against Kathy Fox or Tom Iverson, Norfolk, \$298.12 for damage to vehicle.

Criminal disposition

Denise Frilze, Wayne, issuing bad check, two counts, dismissed.

CONSOLIDATED REPORT OF CONDITION (Including Domestic and Foreign Subsidiaries)

ASSETS		LIABILITIES	
Cash and balances due from depository institutions		Deposits:	
Noninterest-bearing balances and currency and coin		In domestic offices	
Securities		Noninterest-bearing	
Federal funds sold and securities purchased under agreements to resell in domestic offices of the bank and of its Edge and Agreement subsidiaries, and in IBFs		Interest-bearing	
Loans and lease financing receivables:		Demand notes issued to the U.S. Treasury	
Loans and leases, net of unearned income		Other liabilities	
LESS: Allowance for loan and lease losses		Total liabilities	
Loans and leases, net of unearned income, allowance, and reserve		EQUITY CAPITAL	
Premises and fixed assets (including capitalized leases)		Common stock	
Other real estate owned		(No. of shares a. Authorized - 2500. b. Outstanding - 2500)	
Other assets		Surplus	
Total assets		Undivided profits and capital reserves	
		Total equity capital	
		Total liabilities, limited-life preferred stock, and equity capital	

I, the undersigned officer do hereby declare that this Report of Condition has been prepared in conformance with official instructions and is true to the best of my knowledge and belief.

Beverly Ann Hitchcock, Vice President-Cashier
January 12, 1987

We, the undersigned directors, attest the correctness of this Report of Condition and declare that it has been examined by us and to the best of our knowledge and belief has been prepared in conformance with official instructions and is true and correct.

Franklin S. Gilmore
James I. Black
Susan E. Gilmore
Directors

news briefs

Willpower

"Learning Willpower for Weight Control," an eight-week class, will be offered Mondays, beginning Jan. 26 at Providence Medical Center in Wayne, in the Chapin Room. Classes will be held from 7:30-9 p.m. The classes will again be offered in April and June.

"This program is unique because it deals totally with our behavior instead of concentrating on how many pounds we lose each week," said class instructor Loretta Pallas.

The class costs \$30 for eight weeks and includes a binder of materials, diet and exercise diaries, calorie counters book and audio cassette tapes as well as class instruction. Anyone wishing to take the class more than once can do so at no additional cost. No pre-registration is required.

Laurel naming Citizen of Year

Laurel's 1986 Citizen of the Year will be named during the annual dinner meeting of the Laurel Chamber of Commerce on Saturday, Jan. 24. The award is given in recognition of outstanding community service.

The dinner meeting will begin with a social hour at 6:30 p.m. at the Laurel Wagon Wheel Steakhouse, followed with dinner at 7. No advance tickets are being sold.

The meeting also will include installation of 1987 Chamber of Commerce officers.

Pancake feed at Laurel

A pancake feed sponsored by the Laurel VFW and American Legion will be held Sunday, Jan. 25 from 11 a.m. to 1 p.m. in the Laurel city auditorium. The public is invited to attend.

Proceeds from the event will be used for the Avenue of Flags at the Laurel Cemetery. The flags of deceased veterans will be displayed on Memorial Day and other special occasions.

Good Neighbor nominations due

Final nominations for the Ak-Sar-Ben Good Neighbor Awards are due at the Ak-Sar-Ben General Office by Feb. 1. Nominations cannot be accepted after that date.

The Good Neighbor Awards honors individuals and groups cited by neighbors for performing unselfish, neighborly deeds during 1986 without compensation or personal gain.

Honorees will be announced approximately June 1.

Allen school board reorganizes

Dale Jackson and Mike Preston began their new four-year terms as members of the Allen Board of Education when it met Jan. 12.

Newly elected board officers are Matt Stapleton, president; Duane Lund, vice president; Carol Chase, secretary; and Larry Boswell, treasurer.

Board members serving on committees are Larry Boswell and Dale Jackson, curriculum; Mike Preston and Ken Anderson, transportation; and Ken Anderson, Duane Lund and Matt Stapleton, negotiations. All board members will serve on the Americanism committee.

In other business, Superintendent John Werner was offered a contract for the 1987-88 school year.

The board also accepted preliminary reorganization petitions from Martinsburg School District 54 patrons planning to become a part of Allen School District 70R. The Martinsburg district, which operates grades kindergarten through six, is in the process of dissolving.

wayne senior citizens
georgia janssen, coordinator

SENIOR CALENDAR

Thursday, Jan. 22: Bowling, 1 p.m.; bingo, 1 p.m.

Friday, Jan. 23: Film, 1 p.m.

Monday, Jan. 26: Current events, 1 p.m.

Tuesday, Jan. 27: Bowling, 1 p.m.; Bible study, 1:30 p.m.

Wednesday, Jan. 28: Film, 1 p.m.

Thursday, Jan. 29: Bowling, 1 p.m.; Rhythm Band visits Wayne Care Centre, 1:45 p.m.

Attention Medicare People

If you are on Medicare now or will be in the near future, you are eligible for a new Medicare Supplement program that offers outstanding benefits.

1. It helps to pay for prescription drugs.
2. It helps to pay for up to 5 years in a nursing home.
3. It also helped to pay for doctor charges in or out of the hospital based on actual charges, not what Medicare allows.

For more information fill in the coupon below and mail to:

Medicare Supplements

P.O. Box 7342, Omaha, Nebraska 68107

Name _____ Age(s) _____

Address _____

Phone No. _____

We Also Have Information On A Disability Medicare Supplement Not Affiliated with any Government Agency

Brian J. McBride is continuing the tradition of service to the Wayne area. McBride-Wiltse Mortuary provides dignified services at affordable prices.

They have earned the trust and respect of the families they've served.

McBride-Wiltse Mortuary has been a part of Northeast Nebraska for more than 75 years.

Their courteous staff has a sincere concern for the families and an understanding of their needs.

Brian J. McBride

McBride-Wiltse Mortuary

Wayne, Ne. Winside, Ne. Laurel, Ne.

viewpoint

Liability issue

State Senator Gerald Conway of Wayne is expected to introduce a major bill Wednesday to change Nebraska's liability laws. It looks like he'll get some heated debates on his proposed tort reform bill from some other state senators and attorney groups.

He has worked with a coalition of about 100 Nebraska firms and organizations concerned about rising professional liability insurance.

Conway was present when the Wayne Area Chamber of Commerce and the Nebraska Commerce and Industry sponsored a forum last October in Wayne. One of the topics discussed among the businessmen present was the area of tort reform and the support was evident among those at the Wayne forum to change some civil liability and procedure laws in an effort to alleviate the liability insurance cost situation for all of Nebraska.

At that meeting, support was given to the following: eliminating or limiting the joint and several liability rule (when a person sues all individuals associated with a claim, with those having the "deepest pockets" providing money for the awards, even though they do not have the most responsibility in the dispute); placing a cap on how much judges and/or juries can award for "non-economic" damages; requiring a party to a lawsuit to pay all expenses incurred when the court determines the action or the defense to be "frivolous" or without any merit; eliminating the collateral source rule (the jury would not be notified when a plaintiff has received compensation from another source, such as a disability or health insurance policy); and to limit the contingency fee arrangement that some attorneys have with clients which sometimes can be as high as 33 percent to 40 percent going to the attorney.

We suspect that these intentions will be incorporated somewhere into Conway's proposal to the legislature on Wednesday.

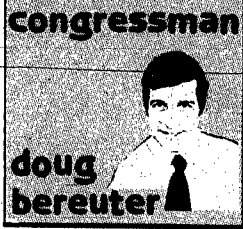
Senators and attorneys are expected to challenge Conway's bill on the grounds that it contains elements that should be addressed in separate bills. Conway contends that his proposal is an omnibus bill, all related in one way or another.

From the reaction of the people attending the October forum in Wayne, it appears there is a growing concern on the growing cost of liability premiums. And although Nebraska may not be on the same level as some states in regard to drastic increases to premiums, it should be addressed before the legislature now before the issue gets completely out of hand.

By Chuck Hackenmiller
Wayne Herald editor

Transportation Act delay explained

Many Nebraskans have written to express concern about the reauthorization of the Federal Highway program. Unfortunately, the 99th Congress failed to pass a Surface Transportation Act. The conference committee handling this legislation was unable to find a successful and realistic compromise between the House and Senate versions of the bill. This failure was not an oversight; it was the intransigence of key conferees on a few issues.



congressman
doug bereuter

Two factors prevented passage of this legislation. First, Senate conferees could not accept an unusually long list of pork-barrel projects that were earmarked by certain key House members. (Excessive numbers of pork-barrel demonstration projects have been a problem in highway bills for a number of years, and this can mean less money for Nebraska.) Second, some House members took a hard-line attitude on the Senate provisions which would

have authorized the states to raise the speed limit on rural interstates to 65 m.p.h.

commitments from prior years amounting to \$41 million.

The good news is that the House is moving quickly. House leadership has scheduled the Surface Transportation Act for debate and votes beginning January 21st. Major delays can be avoided if we obtain a compromise measure with the Senate in a relatively short period of time. I will do what I can to urge early approval of the highway bill.

Delivery of Federal Student Aid Forms Delayed

Congressionally-mandated changes in Federal student aid will result in delays in the delivery of Federal financial aid forms for academic year 1987-88. The new forms had to be changed to reflect amendments in the reauthorization of the Higher Education Act, which was signed into law in mid-October. The new forms may not be completed until late January. Financial aid officials are concern-

ed that students and parents may interpret the delay as a sign that there is no new aid available. That is not so. There will be an estimated \$20 billion available in various types of Federal, state and institutional financial aid for students enrolling in higher education in the fall of 1987.

Health and Medicine Publication "Some Things You Should Know About Prescription Drugs (Item #51P)" reveals what can happen if medications are taken improperly or in combination with other prescription and over-the-counter drugs—or even foods. "Does Your Medicine Chest Need First Aid? (Item #45P)" instructs consumers on how to store prescription drugs safely and keep them organized. For a free copy of either of these booklets, send your name and address and the item numbers to F.M. James, Consumer Information Center, Pueblo, Colorado 81009.

In the legislature Keeping track of the bills

Last week the legislature completed the first six days of business. For the most part, these first days are used to establish rules, elect committee chairs, make committee assignments, move to different offices, and introduce legislative bills that will set the tone for debate. So far 333 bills have been introduced. Since no legislation has been dealt with so far, I thought I might take this opportunity to share some information with you regarding the process.

Senators are allowed the first 10 legislative days to introduce bills (ideas that they would like to have considered). Each bill introduced is assigned to a committee where it will be scheduled for a public hearing and its first vote. There are 13 standing committees, each addresses a



J.P. Doodles WIND CHILL CHART

WIND VELOCITY

TEMPERATURE	5	10	15	20	25	30	35	40	45	50
35	33	21	16	12	7	5	3	1	1	0
30	27	16	11	3	0	-2	-4	-4	-6	-7
25	21	8	1	-4	-7	-11	-13	-15	-17	-17
20	16	2	-6	-9	-15	-18	-20	-22	-24	-24
15	12	-2	-11	-17	-22	-26	-27	-29	-31	-31
10	7	-9	-18	-24	-29	-33	-35	-36	-38	-38
5	1	-15	-25	-32	-37	-41	-43	-45	-46	-47
0	-6	-22	-33	-40	-45	-49	-52	-54	-54	-56
-5	-11	-27	-40	-46	-52	-56	-60	-62	-63	-63
-10	-15	-31	-45	-52	-58	-63	-67	-69	-70	-70
-15	-20	-38	-51	-60	-67	-70	-72	-76	-78	-79
-20	-26	-45	-60	-68	-75	-78	-83	-87	-87	-88
-25	-31	-52	-65	-76	-83	-87	-90	-94	-94	-96
-30	-35	-58	-70	-81	-89	-94	-98	-101	-101	-103



capitol views

specific area of legislation. Each committee consists of seven or eight senators. The committee action may be to advance the proposal, amend and advance, kill, or do nothing at all.

The hearings provide an opportunity for the public to participate and share how they feel about the issue. While each hearing usually has organized interest groups on both sides, there is a strong emphasis on making sure the general public has access and time to speak. Very few bills are advanced without some adjustment, and to a great extent these adjustments are a direct result of the comments made by individuals like yourselves who have valuable insight on many issues. Those bills that survive this first level of scrutiny will be forwarded to the legislative floor where all senators will take part in the debate.

As I mentioned last week, one way to keep track of the legislature is through the "Unicameral Update," a free publication of the Legislative Clerks Office. Additionally, the legislature offers a toll-free "Legislative Hotline." Between the hours of 8 a.m. and 5 p.m. an operator is available to answer your questions.

OPERATORS CAN help with information on the status of bills, schedules for public hearings and they can direct you to the proper source for other legislative services. After hours or on weekends you will have a tape-recorded message of the next day's agenda. The hotline number is 1-800-742-7455.

As the session progresses and you wish to share your thoughts, please contact my Lincoln office. Since I am typically on the legislative floor or in committee hearings during the day, your first line of assistance will often be my Capitol staff. They are always willing to help in whatever way they can. My administrative assistant, Jackie Schizas, has fifteen years experience in the capitol, and always knows what's going on.

Smoking bill sponsored

Statehouse Correspondent
The Nebraska Press Association

Mark Welsh is one of those fanatics about smoking. In the past year he has written more than 40 letters to businesses in the Omaha area pointing out that they are not following the state's Clean Indoor Air Act. He has asked people puffing in grocery store checkout lines to put out their cigarettes. He has picked up ash trays from what should be the smoke-free section of a restaurant and delivered them to the manager. The Omaha man is more than allergic to smoke. "I'm hypersensitive." Smoke makes his eyes water, his head and throat ache and his blood pressure rise.

So Welsh has joined the crusade to create a smoke-free society by the year 2000. That's the motto of the year-old Nebraska Clean Indoor Air Coalition.

And he is among the supporters of LB 95, a bill that would strengthen the State's Clean Indoor Air Act.

THE CURRENT law is clear about smoking. It allows smoking only in designated smoking areas. Unless otherwise posted, there is no smoking. And the seven-year-old law re-

quires posting of appropriate smoking and no smoking signs. That law covers the work site, public buildings, meeting places, larger restaurants—more than 1,200 square feet.

But it is not well understood and is seldom enforced.

Supporters are hopeful that LB 95, sponsored by Lincoln Sen. Shirley Marsh, will change that. THE BILL GIVES nonsmokers preference in disputes with smokers at a work place. It prohibits employers from firing, disciplining or discriminating against a complaining nonsmoker. It requires every employer to have a written smoking policy. And it allows any employee to designate his or her work area as a non-smoking area.

The bill also strengthens the penalty section of the state's Clean Indoor Air Act. Currently only the offending smoker can be prosecuted. The bill expands the penalty section to employers and proprietors of public places. Violation is a Class V misdemeanor, with maximum \$100 fine, for every day the violation occurs.

LB 95 is one of the approximately 800 measures that senators will tackle this year. The bills range from the major — changes in the state's

tax system and proposals allowing counties and school boards to use the income tax — to the minuscule. Senator James Pappas of North Platte introduced a bill that would require restaurants to post cholesterol counts and list the type of oil used in the food served.

Three men who helped make law from the inside of the Legislative chamber in years past will be outside the glass doors working on legislation as lobbyists.

JOHN DeCAMP defeated by veterinarian M.L. Dierkes of Ewing in November, has set up offices on the 17th floor of Lincoln's FirstTier Bank and registered as a lobbyist with the Unicameral. His first client is the Nebraska Association of Trial Attorneys who are paying him \$3,000 a month to oppose tort reform bills. Those bills will likely try to put a ceiling on damage claims and attorney fees in liability cases.

Tom Vickers, who lost his legislative seat, Owen Elmer of Lincoln, is representing the Sierra Club for a \$6,000 session fee. Harold Sieck of Pleasant Dale, who retired this year, will be representing the Nebraska Grange on farm issues. His fee is \$300 for the session.

Ombudsman fields complaints

NEBRASKA FARM BUREAU FEDERATION
by Cheryl Stubbenleick,
vice president/information

The days are long past in Nebraska and most other places when government did little more than levy taxes, build roads, fight fires and arrest criminals. Nowadays government is highly sophisticated and complex and when you've got a problem or a complaint, it's not always clear how to go about clearing it up.

Recognizing this, the Nebraska Legislature established the Office of the State Ombudsman in 1969 and provided funding for it in 1971. It is essentially the complaint handling agency of state government and administratively is part of the legislative branch. Any Nebraskan who's got a problem or complaint or just needs to know which governmental body to get in touch with can contact the Ombudsman for help.

Marshall Lux, an attorney, is the current ombudsman, appointed by the legislature for a six-year term. He and his small staff receive and investigate citizen complaints about state government, and if they determine a complaint is valid, they try to negotiate a solution. They can't compel action by state government agencies, but most work with them to

resolve problems. The emphasis is on informality and red-tape cutting.

FOR EXAMPLE, a farmer who's controlling noxious weeds on his land is irked that adjacent state-owned property has musk thistles by the bushel. He doesn't know for sure which government agency administers the land, but if he complains to the Ombudsman, that office will find out and contact persons in authority to get the weeds controlled. Or perhaps the design of a new road is causing run-off onto a farmer's land, or resurfacing of a highway has kept the farmer's driveway closed for an excessive time. If it receives a complaint, the Ombudsman's Office will make contacts to get the problem resolved.

The office handles more than agricultural complaints, of course, and farmers and ranchers have many of the same kinds of problems as other people, such as driver's license problems. But it has successfully resolved complaints related to the brand committee, water appropriation and cancellation, livestock disease inspections and truck weighing, to cite a few examples.

Not all agencies of state government fall within the Ombudsman's jurisdiction: the governor and her immediate staff, the courts, the

legislature itself and political subdivisions such as counties, cities and Natural Resources Districts are excluded. The Ombudsman will, though, try to refer a complainant to another helpful source.

The Ombudsman's Office handles more than 1,200 cases a year. Some are resolved with a few phone calls; others take months of investigation. That number doesn't include problems that can be resolved right away when the citizen calls or comes in.

ALTHOUGH THE Ombudsman can't always resolve problems in the manner people want, more than 80 percent of those who used the office in 1980 and responded to a survey said they were satisfied.

The identity of the complainant will be held in confidence if the citizen requests it, Lux says, and even anonymous complaints are treated seriously.

Nebraskans with a complaint or question can get in touch with the Ombudsman's Office by writing to P.O. Box 94712, Lincoln, NE 68599, or by calling this toll-free number: 800/742-7690. Or you can drop in when you're visiting the State Capitol. It's off the beaten track, on the 8th floor, but it's worth the elevator trip if you've got a problem with state government.

Life in the fast food lane.



It can be a slow death if you're loading up on high-cholesterol, high-fat foods that may eventually choke your arteries and damage your heart. If you're a teenager, slow down on fast food that's high in fat. Chances are it'll catch up with you someday if you don't.



WE'RE FIGHTING FOR YOUR LIFE

THE WAYNE HERALD

PUBLICATION NUMBER — USPS 870-560
Serving Northeast Nebraska's Greatest Farming Area

Publisher — J. Alan Cramer
Managing editor — Chuck Hackenmiller
Assistant editor — Lavon Anderson
Sports editor — Gregg Dahlheim
Business manager — Jim Marsh
Advertising executive — Fatti Ernst
Receptionist — Jackie Nolan
Bookkeeper — Linda Granfield
Typesetter — Alyce Henschke
Composition foreman — Judi Topp
Composer — Barb Paulsen
Press foreman — Ray Murray
Pressmen — Al Pippitt
Darkroom Technician — Jeff Sperry
Commercial printing manager — Dave Dielder
Commercial printer — Mike Bebee
Mailroom manager — Doris Caussen
General assistant — Betty Gillen

PRIZE WINNING NEWSPAPER 1986

National Newspaper Association
Sustaining Member 1986.

114 Main Street Wayne, Nebraska 68787 Phone 375-2600

Established in 1875; a newspaper published semi-weekly Monday and Thursday (except holidays), by Wayne Herald Publishing Company, Inc., J. Alan Cramer, President; entered in the post office and 2nd class postage paid at Wayne, Nebraska 68787.

POSTMASTER: Send address change to The Wayne Herald, P.O. Box 71, Wayne, NE 68787.

Official Newspaper of the City of Wayne, the County of Wayne and the State of Nebraska

SUBSCRIPTION RATES

In Wayne, Pierce, Cedar, Dixon, Thurston, Cumings, Stanton and Madison Counties: \$16.69 per month, \$19.98 for six months, \$12.16 for three months. Outside counties mentioned: \$15.00 per year, \$16.00 for six months, \$14.00 for three months. Single copies 25 cents.

4a - speaking of people

The Wayne Herald, Thursday, January 22, 1987

In Wayne city auditorium

'Turn Your Heart Toward Home' Dobson film series begins Feb. 1

The Wayne Ministerial Association is hosting a new series of films by Dr. James Dobson, entitled "Turn Your Heart Toward Home."

The six-part film series will be shown each Sunday evening, beginning Feb. 1 and continuing through March 8, from 6 to 8 p.m. in Wayne city auditorium.

The Rev. Kenny Cleveland said each presentation will include a 40-minute film and an opportunity for small group discussion and refreshments immediately following.

Each film presentation is free and open to the public, however a free will offering will be taken to help cover the cost of the films.

"TURN YOUR Heart Toward Home" film topics and the dates they will be presented are:

Feb. 1 — "A Father Looks Back" (priorities in life)

Feb. 8 — "Power in Parenting: The Young Child."

Feb. 15 — "Power in Parenting: The Adolescent."

Feb. 22 — "The Family Under Fire" (pornography).

March 1 — "Overcoming a Painful Childhood" (Shirley Dobson on her experience with an alcoholic father).

March 8 — "The Heritage" (values and morality).

"TURN YOUR Heart Toward Home," in which Dr. James and Shirley Dobson share their lives and insights, is a call for Americans to return to traditional values.

Dr. Dobson, a well-known teacher and psychologist, is founder and president of Focus on the Family, a non-profit corporation dedicated to the preservation of the home.

His "Focus on the Family" film series has been viewed by more than 50 million people, and his radio program with the same name is broadcast daily on more than 800 stations across the United States and Canada.

In addition, Dr. Dobson is the author of nine best-selling books, including "Love Must Be Tough."

DR. DOBSON is a licensed psychologist in the state of California and served 17 years on the attending staff of Children's Hospital of Los Angeles. He was an associate clinical professor of pediatrics at the University of Southern California School of Medicine until 1983, having served 14 years on that faculty.

In 1980, President Jimmy Carter appointed Dr. Dobson as delegate-at-large to the White House Conference on the Family.

In 1982, he was appointed by President Ronald Reagan to the National Advisory Commission to the Office of Juvenile Justice and Delinquency Prevention, where he served for three years.

More recently, he has served on the Attorney General's Commission on Pornography, and was co-chairman



James and Shirley Dobson

of Citizens for Tax Reform.

Currently, Dr. Dobson lives in southern California with his wife Shirley and their two children, Danae and Ryan.

briefly speaking

Observing Women of Today Week

Women of Today across America are celebrating U.S. Women of Today Week on Jan. 18-24. Wayne County Women of Today are members of the U.S. Women of Today and have been an active chapter in the community.

Women of Today is a leadership organization involving young volunteers between the ages of 18 and 40. In Nebraska, Women of Today members support such foundations as Make A Wish, Aid to Foster Children, Cystic Fibrosis, March of Dimes, and St. Judes. Locally, the organization donates to the Wayne County Food Pantry and supports such projects as Toys for Tots.

Patient at VA hospital

Gene Barker, brother of Arthur Barker of Wakefield, is a patient in the Veterans Hospital at Omaha and is expected to be there for sometime for treatment.

Cards and letters will reach him if addressed to Milo E. (Gene) Barker, c/o Veterans Administration Medical Center, Room 7 West E-602-2, 4101 Woolworth Ave., Omaha, Neb., 68105.

School of Nursing graduate

Pamela Kingston Rush graduated from Arizona State University School of Nursing with highest honors on Dec. 18 and shared highest honors with Michael Conrad during commencement exercises for the 1,525 students on Dec. 19.

Both students were honored for earning straight A's during their university years, and both received the Moeur Award which is the oldest continuous academic award given by the university.

Mrs. Rush is the daughter of Dr. and Mrs. Jerry Kingston and both graduated from Wayne State College in 1962. Grandparents of Mrs. Rush are Mr. and Mrs. Jack Kingston of Wayne and Mrs. Gertrude Ohlquist of Wakefield.

Mrs. Rush was chosen as an intensive care nurse as part of a heart transplant team at a Minneapolis hospital. Her husband, Michael, is a graduate student at the University of Minnesota.

Acme meets in Hall home

Fourteen members of Acme Club met recently in the Kent Hall home. Guests were Lois Hall, acting as hostess for Heatie Hall, and Mae Morgan of South Sioux City, a sister of President Helen James.

Following the business meeting, each person told of a woman they admire. Faun Korn reviewed the book "Eveline the Troubleshooter was a Lady," the story of a Nebraska woman.

Next meeting will be in the home of Betty Wittig on Feb. 2 with a paper shower for the Wayne County Food Pantry.

Minerva Club meets for luncheon

Minerva Club met at the Black Knight for a luncheon on Jan. 12. Afterward, members traveled to the Beth Morris home for a business meeting and program.

Pauline Nuernberger will be the Jan. 26 hostess.

Pig stories told at Merry Mixers

Vera Mann was hostess for the Jan. 13 meeting of Merry Mixers Club. Eleven members answered roll call with a favorite pig story. The group also sang "Billy Boy."

Members discussed "Pork — the New, White Meat" and exchanged pork recipes. A thank you was read from Deb Altemann and family.

Plans for a family party will be discussed at the next meeting, scheduled Feb. 10 in the home of Lydia Thomson. The hostess and Esther Hansen will show a film on Nebraska tourism, and roll call will be a favorite movie.

Redeemer circles meet

Circles of Redeemer Lutheran Church met on Jan. 14. Mary Circle met at the church at 9:15 a.m. with Norma Koeber as hostess. Fifteen members attended, and the program by Marilyn Pierson was entitled "Richness of Epiphany."

Barbara Sievers was hostess for Dorcas Circle at 2 p.m., with 20 members attending. Joyce Sievers gave the lesson.

Eight members of Martha Circle met at 7 p.m. in the home of Marilyn Bodensiedt. Aileen Sievers gave the lesson.

Next circle meetings will be Feb. 11. All women of the church are invited to attend any of the meetings.

engagements



Fillmore-DeTurk

Mr. and Mrs. Don Fillmore of Belle Plaine, Kan. announce the engagement of their daughter, Cheryl, to Dr. Dwayne DeTurk of Wichita, Kan. Dr. DeTurk is the son of Marilyn DeTurk of Wayne and the late Gene DeTurk.

Miss Fillmore is a registered nurse in the intensive care unit at Wesley Medical Center in Wichita. Dr. DeTurk is specializing in radiology and has accepted a position in Salina, Kan. following completion of his residency at Wesley in July.

A March 7 wedding is being planned.

VFW Auxiliary meets

Fourteen members of Llewellyn B. Whitmore VFW Auxiliary No. 5291 attended a meeting Jan. 12 in the Wayne Vet's Club room. Hostesses were Lillian Granquist and Cleva Willers.

Vice President Cleva Willers called the meeting to order, and Eveline Thompson read the treasurer's report. Mrs. Thompson also reported 65 paid memberships.

Members received notification of a Gold Star resident at Wayne Care Center.

The group received dues collection information from District III President Joyce Lantz. A letter was read from Barb Collins, department membership chairman, announcing that Nebraska is number one in membership and first in the division.

The group received Christmas greetings from M & M Pillow Cleaning, and a thank you for its donation to the Health and Happiness Fund.

EVELINE THOMPSON reported the receipt of additional poppy sales. She also outlined the recent increase in the dues structure as it concerns cancer insurance.

Helen Stefken reported she sent 10 Thanksgiving cards and nine Christmas cards. The auxiliary also presented a Christmas gift to Bessie Perry, a resident of Wayne Care Center.

Verna Mae Baier reported that Melinda Olson was the Voice of Democracy winner from Wayne-Carroll High School, and Christina Thies was the winner from Winside High School.

Melinda also was selected District III Voice of Democracy winner and will now be entered in department competition.

Next meeting of VFW Auxiliary 5291 is scheduled Feb. 9.

Program on Haven House presented at UMW meeting

First United Methodist Women met for a 12:30 p.m. luncheon on Jan. 14 with 48 members and one guest attending. The vice president presented devotions on "Faith," and hostesses were Imogene Brasch and Joyce Niemann.

Presenting the afternoon's program was Michelle Meyer, who talked about Haven House, the role it plays in the community, and on the family abuse program.

PRESIDENT FERN Kelley opened the business meeting with a poem, "Seasons of the Heart." The president also thanked Connie Hall, vice president, for talking charge while she was hospitalized and during her recuperation at home.

Kay Marsh presented Mrs. Marcla Eriksen as a new member of United Methodist Women.

Honored with the birthday song were Marjorie Porter, Delta Mae

Preston, Evelyn Kay, Verna Rees and Grace Mellick.

IT WAS ANNOUNCED that a new Dobson film series, entitled "Turn Your Heart Toward Home," will be presented Feb. 1, 8, 15 and 22, and March 1 and 8 from 6 to 8 p.m. in Wayne city auditorium.

The film series is being sponsored by the Wayne Ministerial Association and is open to the public.

Mrs. Maxine Robins, mission coordinator, announced there will be a soup and salad supper on Feb. 8 at noon.

NEXT LUNCHEON meeting will be Feb. 11. Hostesses will be Margaret McClelland, Nana Peterson, Opal Marsh, Loreene Gildersleeve, Minnie Campbell, Rachel Wolske, Nancy Fuesberth, Edna Anderson, Varda Morris and Dorothy Brandstetter.

Dixon County Council introduces '87 program

Dixon County Home Extension Council members were introduced to 1987 program activities during a meeting held Jan. 14 at the Northeast Center.

Conducting the meeting was Evonne Magnuson of Laurel, council chairman. Joanne Rahn of Allen, vice chairman, led the mini-lesson on seat belt safety.

Citizenship Leader Eva Armstrong, Ponca, reviewed 1987 citizenship goals and urged each club to include citizenship topics at their meetings.

SONDRA MATTES of Wakefield, family life leader, told council members of the James Dobson Series of family life films recently sponsored by churches in Wakefield. Pearl Snyder of Allen, health and safety leader, explained the importance of smoke alarms in the home and also encouraged club members to update and renew their CPR techniques.

Other program events discussed included county fair activities, a poster contest for school age children, a citizenship tour to the state legislature and capitol, the cultural arts contest, and membership recruitment plans.

Next regular council meeting will be May 13.

Open House
Honoring the 40th Wedding Anniversary of
Richard & Bass Bator
of Wayne will be held
Saturday, Jan. 24
from 2 to 4 p.m. in the
Women's Club Room.
All friends and relatives
are invited.
No gifts requested.
Hosted by their children.

let your words do the talking in the

CLASSIFIEDS

Calico

Calico's new woven

comfort & value

Black Leather
\$32.95
3 1/2 M-10 Medium
7N-9 Narrow

WAYNE SHOE COMPANY
216 Main St. — Wayne

GRIESS REXALL COUPON
Developing & Printing
COLOR PRINT FILM

12 Exposure Color Print Film	\$2.59
15 Exposure Disc Film	\$3.29
24 Exposure Color Print Film	\$4.59
36 Exposure Color Print Film	\$6.79

Coupon Expires February 1, 1987

GRIESS REXALL

Hot Times!

JOIN AK-SAR-BEN!

The George Burns Show
starring George Burns
with The Aldridge Sisters
March 16-22

George Strait
with special guest star Marie Osmond
March 30-April 5

Miami Sound Machine
September 1-6

The Oak Ridge Boys
with Gary Mule Deer
September 7-13

YES! I want to treat my family to 1987's Hot Times. I hereby apply for a 1987 non-stock, non-assessable supporting membership in the Knights of Ak-Sar-Ben. (Make checks payable to Ak-Sar-Ben.)

Name _____
Address _____
City _____ State _____ Zip _____
Mail to: Al Cremer, c/o The Wayne Herald, 114 Main, Wayne, NE 68787

Check one: New Membership Gold \$50 Regular \$30 Renewal Membership

HURRY!
Only 20,000 Gold Memberships to be sold. All memberships available on a first come basis.

WSC campus minister accepts position with Homestead Presbytery

The Rev. Jim Thompson, campus pastor at Wayne State College since May 1984, will be leaving the college to assume a new position as Interim Executive Presbyter for Homestead Presbytery of the Presbyterian Church USA.

Thompson was elected to the position in late November and will assume his new responsibilities on Feb. 1.

Homestead Presbytery is headquartered in Lincoln, where Thompson will be moving next week.

BEFORE COMING to Wayne, Thompson served pastorates in California and Colorado for 14 years. He was employed at Wayne State College by the Wayne Ecumenical Campus Ministry, which is sponsored by the National Lutheran Campus Ministries (ALC, LCA, AELC), Disciples of Christ (Christian Church, Presbyterian Church USA, United Church of Christ, and the United Methodist Church).

The Wayne program is housed in the Campus Ministry House at the corner of 14th and Schreiner.

A SEARCH process will begin shortly to name a successor to



Rev. Jim Thompson

Thompson, possibly by this summer. Thompson's new position carries the responsibility for being the chief administrator for 65 eastern Nebraska Presbyterian Churches with a membership of over 14,000, and for some 80 Presbyterian pastors.

'File it Easy, Find it Fast'

Workshop set at Winside

A workshop sponsored by the Cooperative Extension Service on Tuesday, Jan. 27, entitled 'File it Easy, Find it Fast' will show consumers how to establish and properly maintain a home filing system.

Mary Temme, extension agent-home economics, said participants will learn about types of filing systems, tools and equipment options, and the advantages of color-coding.

In addition, participants will learn the three places important papers

are kept, where to get copies of misplaced vital records, and how long records and papers need be kept.

REPRESENTATIVES of community groups or organizations are invited to attend the training meeting on Jan. 27 at 1:30 p.m. in the Winside Fire Hall.

Additional information on the lesson may be obtained by calling the Wayne County Cooperative Extension Service office at 375-3310.

community calendar

SATURDAY, JANUARY 24
Winter storytime (ages 3-6), Wayne Public Library, 2 p.m.
SUNDAY, JANUARY 25
Alcoholics Anonymous, Fire Hall, second floor, 8:30 a.m.
MONDAY, JANUARY 26
Minerva Club, Pauline Nuernberger

Wayne Chapter 194 Order of the Eastern Star Installation of new officers, 7:30 p.m.
Alcoholics Anonymous, Wayne State College Prairie Room, 8 p.m.
TUESDAY, JANUARY 27
Sunrise Toastmasters Club, city hall, 6:30 a.m.
Villa Wayne Tenants Club weekly meeting, 2 p.m.

PAMIDA

Advertised
Specials
Every
Week

The Pamida Plus

SALE

Week in, week out, our sale circulars highlight top values on hundreds of special buys for you, your family, and your home...that's

 <p>2 FOR 5.00 Ladies' thermal knit top or thermal bottoms. Special construction retains warmth. Prints or solids. M,L,XL</p>	 <p>4.99 Ladies' cotton flannel pj's or gowns in pretty prints. PJ's in sizes 34 to 48; gowns in sizes S,M,L, 42-48.</p>	 <p>7.99 Ladies' hooded fleece top with zip front and 2 front pockets. All acrylic. Red, blue or pink. S,M,L</p>	 <p>1.19 Men's thermal knit boot socks. Fully insulated and cushion lined. Fit sizes 10-14. All other thermal socks... 33% Off</p>
 <p>2.99 Ea. Men's thermal top or drawers of 50% cotton/50% polyester. Great for winter's cold. Sizes S,M,L,XL</p>	 <p>25% OFF Insulated Coversalls Our entire inventory of men's insulated coversalls is now reduced. Reg. 29.99 to 49.99 NOW 22.49-37.49. While quantities last. Styles may vary.</p>	 <p>25% OFF Men's Flannel Shirts Our entire inventory of flannel shirts for men. Some quilted. Reg. 6.99-18.99 NOW 5.25-14.24. While quantities last.</p>	 <p>33% OFF Winter Hats & Gloves Many styles for men, women and children. Great selection of colors, too. Reg. 99-11.99 NOW .66-7.98.</p>
 <p>.59 Check-up toothpaste or gel, 3 oz. each. With fluoride and microsil that helps remove plaque.</p>	 <p>.88 Dazzle Aire 4-ply yarn. Acrylic/nylon blend. In a dazzling array of colors.</p>	 <p>2 FOR 1.00 Natura Sports Acrylic yarn of 100% acrylic. 50 gram ball. Sports weight. 15 colors.</p>	 <p>2 FOR 7.00 Super size bath towel made of thick and thirsty 100% cotton. 32 x 50 in. size. Small imperfections. Assorted solid colors.</p>
 <p>2/7.00 Arm & Hammer heavy duty laundry detergent. 227 oz. Removes tough stains & dirt.</p>	 <p>9.99 Women's sporty casuals with soft polyurethane suede like lining. Flexible bottoms. Sizes to 10.</p>	 <p>.99 Men's chore gloves. Rubberized for water repellency.</p>	 <p>2/3.00 American Water Softener Salt, 40-lb. bag.</p>
			 <p>2.99 12-Pack Coke Products. Coke, Diet Coke, 7-Up, Diet 7-Up, Cherry Coke.</p>

PRICES EFFECTIVE THRU SUNDAY, JAN. 25, 1987

EAST HIWAY 35 - WAYNE

Vickie Vogel
INVEST/INSURE
Representative



The ICAP Variable Annuity 12-Month Scorecard

Portfolio	Total Return*
Growth	14.06
Fixed Income	15.15
U.S. Government Securities	9.96

INVESTMENT SERVICES FOR AMERICA
INVEST
A SERVICE OF ISFA CORPORATION
MEMBER SIPC

Located at:


Columbus Federal
SAVINGS BANK

*Amounts indicated represent the change in accumulation unit values for the separate accounts from 11-27-85 to 11-28-86 and reflect income return and appreciation in value of securities held in the underlying portfolios, including reinvestment if all dividends and distribution after deduction of all fees and expenses. These historical results should not be regarded as an indication of future performance and investment results will fluctuate with market conditions.

Flexible premium variable annuity. Policy form series FPVA and FRVA. Not available in all states. Tom Seaver is currently investing in ICAP and has been compensated for this endorsement.

Vickie Vogel, INVEST Representative, will be in the Wayne office on Friday, January 23rd from 9:00 to 12:00.

For investment information CALL us at 375-1114

INVESTMENT SERVICES FOR AMERICA
INVEST
A SERVICE OF ISFA CORPORATION
MEMBER SIPC


Columbus Federal
SAVINGS BANK

220 West 7th
Wayne, NE

4,000 REASONS TO SHOP WAYNE

Check the specials in each merchants ad—then clip each coupon and deposit in the named store. Each week there will be drawn each week for 8 weeks. These people will be eligible for the Grand Prize Drawing to be held Saturday, February 28, 1987. Grand Prize: **Arizona • Florida • Bermuda • Hawaii • Boat Excursion through the Virgin Islands (value up to \$3,000) 2nd Prize \$1,000**
 • Limit one winning name per family • No purchase necessary

A Remarkable New Way To Learn—And Save.



Buy before March 15th and receive cash rebates of up to \$250.

The remarkable Apple II GS. With vivid graphics, brilliant color and amazing sound—it'll give your kids a remarkable new way to learn. And right now, we'll give you a spectacular way to save! Simply purchase a basic Apple II GS system* before March 15, 1987 from an authorized Apple dealer and you'll receive cash rebates of up to \$250 on virtually any of the Apple-branded peripherals, accessories and software you select. And what a selection you'll have: printers, modems, disk drives and more. Plus, you'll save on Apple-branded software programs. And with 10,000 other programs from the world's largest educational software library, you and your family will never outgrow your Apple II GS. Which means, right now, you can enhance your children's education with a complete Apple II GS system—at a price you know you can afford. Hurry in to see us today. *The power to be your best.



OFFICE CONNECTION

NAME _____

ADDRESS _____

OFFICE CONNECTION

INSURANCE



...WHEN YOU NEED IT YOU NEED A FRIEND.

When illness strikes the last thing you should have to worry about is the bills. Even a short hospitalization can bankrupt you if you don't have insurance. Arrange for complete coverage... call us!

- Total insurance service
- For your car and home
 - To protect your family
 - To protect your health
 - For your business needs

NORTHEAST NEBRASKA INSURANCE AGENCY PIA
 111 West 3rd Wayne Phone 375-2898

N.E. NEBR. INSURANCE

NAME _____

ADDRESS _____

N.E. NEBR. INSURANCE

201 Main Wayne, Nebr. 375-2464

Kuhn's

Maverick Jeans

Boot Cut & Straight Leg
 14 3/4 Oz. Automatic Denim
 No Wrinkles • No Shrinking
 No Puckering • Less Fade Out
 Size 28 to 46 Waist



\$9.99

KUHN'S

NAME _____

ADDRESS _____

KUHN'S



12-Pack Busch \$3.79 Warm or Cold

White Mountain Coolers \$1.95 4-Pack

VCR and Video Rentals

LaCroix Coolers \$2.39 6-Pack

Open 6 a.m.-2 a.m. 7 Days A Week

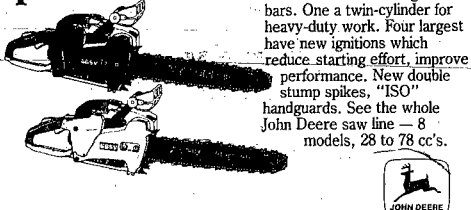
CASEY'S

NAME _____

ADDRESS _____

CASEY'S

New John Deere chain saws start easier, run smoother, perform better



Five new models—44 to 64 cc's with 18- to 27-in. guide-bars. One a twin-cylinder for heavy-duty work. Four largest have new ignitions which reduce starting effort, improve performance. New double stump spikes, "ISO" handguards. See the whole John Deere saw line—8 models, 28 to 78 cc's.



LOGAN VALLEY IMPLEMENT
 East Hwy. 35 Wayne 375-3325

LOGAN VALLEY IMPL.

NAME _____

ADDRESS _____

LOGAN VALLEY IMPL.

Super Bowl Sunday

January 25 Noon - ???

Big Screen TV Video Tapes

1971—Nebraska-Oklahoma (Game of the Century)
 Super Bowl XX—Chicago-New England

Super Bowl XXI

Complimentary Bowl of John Madden Stew



Come Early—Get Your Seat

The Varsity

109 Main

375-5041

Wayne

THE VARSITY

NAME _____

ADDRESS _____

THE VARSITY

6-Pack Pop All Flavors \$1.59



Sav-Mor Pharmacy

1022 Main St. Wayne 375-1444

SAV-MOR PHARMACY

NAME _____

ADDRESS _____

SAV-MOR PHARMACY

MAGNUSON EYE CARE

112 East Second, Mineshaft Mall

Presents

"EYE OPENERS"



Q: Should I get my eyes examined every year? How about my children?
 A: If you are over 35, in your teens or a school-aged child, an annual vision examination may be necessary. Once every two years may be all you need if you are in your twenties and early thirties, unless your optometrist advises otherwise. Parents should start their children off with a first vision examination by age three and again before entering school. Since vision may change rapidly during the school years, annual examinations make good sense. After age 35, year, optometric examinations are needed to detect eye disease signs early and to keep pace with changes in vision that occur naturally as we get older.

MAGNUSON EYE CARE

NAME _____

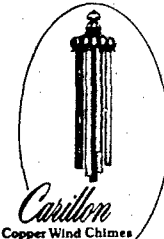
ADDRESS _____

MAGNUSON EYE CARE

Interesting New Item

Carillon Wind Chimes

High Quality
 Uniquely Hand-Made of Heavy Cast Copper
 No Two Alike
 3 Sizes Available



Handsome Gift That Will Last A Lifetime

Make Someone Feel Special
 With A Carillon Wind Chime!

RUSTY NAIL

218 MAIN (402) 379-3799

WAYNE, NE 68787

RUSTY NAIL

NAME _____

ADDRESS _____

RUSTY NAIL

4,000 REASONS TO SHOP WAYNE

coupons will be gathered and a drawing will be held Tuesdays at 10:00 A.M. at Daylight Donuts. Two names a week, March 14. The winner will receive a FREE TRIP FOR TWO to either •Las Vegas •Aspen Colorado •Phoenix and will receive \$1,000 in Vacation Bucks to be spent in any of the participating stores. If you are the grand prize winner and your name is on a newspaper coupon — you will receive a BONUS — A COMPLETE SET OF TRAVEL LUGGAGE!



Your first stop should be here — if you are going to buy or sell real estate or if you need management services.

Give Us A Call At 375-1262 Or Stop At 108 West 1st Street STOLTENBERG PARTNERS



STOLTENBERG PARTNERS

NAME _____

ADDRESS _____

STOLTENBERG PARTNERS

MINESHAFT MALL
112 East 2nd
Wayne - 375-4347
Open Daily
11 A.M. to 11 P.M.
Family Dining
PIRATA STYLE™ Mexican Food Restaurants
Our goodness comes from the sun.



Coupon

Fiesta del Sol

Buy One,
Get One Free

Expires Feb. 15

TACO DEL SOL

NAME _____

ADDRESS _____

TACO DEL SOL



January Clearance

Better Than Ever
Regrouped and
Repriced

SWAN'S

NAME _____

ADDRESS _____

SWAN'S

Daylight Donuts
212 Main 375-4151

**For You Coffee Drinkers
Early Morning Special**
From 6 a.m. to 7 a.m.

**Nickel Coffee
With Any Purchase
Of A Donut or Roll**

All You Can Drink Anytime

DAYLIGHT DONUTS

NAME _____

ADDRESS _____

DAYLIGHT DONUTS

“Come go with us”

trio travel 100 MAIN 402-375-2670
WAYNE, NE 68787

**7-DAY
CARIBBEAN CRUISE**
FT. LAUDERDALE TO
ST. THOMAS, ST. CROIX, NASSAU

Starting At **\$1215⁰⁰**
Second Person **1/2 Price**

Includes round trip air from Omaha.
Book and deposit \$200 by January 31.
Travel anytime during 1987.

TRIO TRAVEL

NAME _____

ADDRESS _____

TRIO TRAVEL

**Light Truck Tires
Now At Light Prices!**

Goodrich

**TRAILMAKER[®]
STEEL BELTED RADIAL**
\$63⁰⁰ Poly/Steel Blackwall
P235/75R15XL

**TRAILMAKER II[®]
STEEL BELTED RADIAL**
\$59⁹⁰ Poly/Steel Blackwall
P235/75R15

Fredrickson Oil Co.
1 1/2 miles N. Hwy. 15 Wayne, NE
Phone 375-3535 or Toll Free 1-800-672-3313

FREDRICKSON OIL

NAME _____

ADDRESS _____

FREDRICKSON OIL

**CHECK OUR
DAILY MENU**

Thursday, Jan. 22 Beef & Noodles, Potato Soup
Friday, Jan. 23 Hot Beef, Breaded Fish
Saturday, Jan. 24 Baked Pork Steak, Ham & Bean Soup
Sunday, Jan. 25 Swiss Steak, Roast Beef
Roast Turkey & Dressing, Baked Chicken & Dressing
Monday, Jan. 26 Meat Loaf, Vegetable Beef Soup
Tuesday, Jan. 27 Creamed Chicken & Biscuit, Potato Soup
Wednesday, Jan. 28 Breaded Hamburger Steak
Chicken Noodle Soup

POPO'S II

375-4472 705 LOGAN WAYNE

POPO'S II

NAME _____

ADDRESS _____

POPO'S II

From the Bank Wayne Calls First. . .

**Fixed-Rate
IRA'S**

AT
7.50%*

*This annual rate is guaranteed for an investment term of 30 months with a minimum deposit of \$100.00 and is insured by FDIC up to \$100,000. Substantial penalty for early withdrawal.

FIRST NATIONAL BANK
of Wayne
Member FDIC

FIRST NATIONAL BANK

NAME _____

ADDRESS _____

FIRST NATIONAL BANK

WE TREAT YOU RIGHT[®]
THE 32-OZ. BIG Q FILLED WITH
YOUR CHOICE OF POP IS NOW
38¢

Dairy Queen **QUENCHER** **BIG Q**

brazier.

© U.S. Pat. Off., Am. D.Q. Corp. Copyright 1986, Am. D.Q. Corp., Maple, MN Printed in U.S.A.

If your name is drawn from our business you will receive a FREE 8-INCH DO CAKE. If you are the grand prize winner, you will receive a \$50 DO GIFT CERTIFICATE.

COUPON

DAIRY QUEEN

**BUY ONE SANDWICH AT THE
REGULAR PRICE AND GET
A REGULAR FRY FREE**

Good Jan. 21-27, 1987

DAIRY QUEEN

NAME _____

ADDRESS _____

DAIRY QUEEN

grandstand gab

District play difficult

It is about that time of the season when coaches, players, and fans begin looking to district and sub-district pairings to see if their team can reach everyone's goal—the state tournament.

Although district play is about a month away, the Nebraska School Activities Association has released the sites and the teams involved in the 78 districts throughout Nebraska.

The following is a glimpse at what the area schools will be in for when they enter post-season play.

Wayne is in District B-4, the toughest district from top to bottom in Class B. Four of the eight teams in both the boys' and girls' division of the district are currently rated in the Class B top 10. The Blair Bears, Class B's top team, will probably enter as the top seed unless they stumble before then.

Although unranked, Hartington CC, 9-2, will also be a threat in the district. Rounding out the group are Wayne, who has been impressive at times, North Bend and West Point.

This district, being played at NorthEast Community College in Norfolk, could realistically eliminate a state champion.

In the girls portion it's just as tough. The top two teams, Columbus Scotus and Hartington CC will be the favorites. Coming in at numbers eight and nine in Class B are Blair and West Point. Wayne, 9-1, could also challenge for the district crown.

No teams in the boys or girls division of Class C1-9 are among the top 10. This district, being played at South Sioux City, is where Wakefield will do battle. Also in the district are Emerson-Hubbard, Homer, Macy and Ponca.

Laurel is in Class C1-10 at Norfolk. Along with Laurel are Norfolk Catholic, Pierce and Stanton.

Allen High School will travel to Homer to play in district play in Class C2-7.

Class C2's second ranked boys' team, Bancroft-Rosalie, will be the favorite. No other teams are among the top 10 in the state. Wakefield and Winnebago round out the district.

Laurel will be the site for the boys and Randolph for the girls in Class C2-8. Wausa will be favored to win both the boys and girls crown. The Vikings are No. 1 in Class C-2 while the Lady Vikings hold down the No. 8 spot. Other teams in the district are Winside, Hartington, Newcastle and Wynot.

Now for my final football prognostication of the season. The Super Bowl.

Besides the Indianapolis Colts, these two teams probably played as well as anyone the last couple weeks of the season.

The Giants have been made a nine-point favorite in the 21st classic at Pasadena. They haven't really been tested in the playoffs as they punted San Francisco and the Redskins.

On the other hand Denver had two tough playoff games to get to its second Super Bowl. What does that mean after a two-week layoff? Probably nothing!

But the Giants have it all. Not only the best defense in the game but also a very underrated offense. If you can't tell by now I like the Giants.

The NFC has been hot the last several years and this year will be no different. It will be closer than last year's fiasco.

The Giants will cover the spread and win 31-17 and for the first time in several weeks Bill Parcells will get his Gatorade bath in above freezing temperatures.

Winside pounds Homer

The Winside Wildcats had no trouble rebounding from their upset loss to Wakefield as they crushed Homer Tuesday night 54-40.

Coach Jill Stenwall said the difference between the Wakefield loss and this game was twofold. Stenwall said her team was ready to play against Homer and the Wildcats hit the boards a lot more aggressively than they did in the loss.

Both teams started out slow but the pace picked up considerably in the second half.

Winside scored the last five points in the first quarter to lead 12-8 going into the second period. Neither team could do much scoring in the second quarter as Winside went to the locker room at halftime with a 17-10 lead.

Both teams got their shooting touch back in the second half as 67 points were scored in the last 16 minutes. The hosts outscored Homer 37-30 in the half.

The Wildcats were sparked by the shooting of Christi Thies in the third quarter. The senior scored six of her 16 points in a two-minute span on three baskets. Winside led going into the final period 33-23.

Winside spent most of its time at the free throw line in the fourth period. Kristi Miller was the Wildcats' mainstay at the line. The sophomore hit 13-15 free throws in the last quarter. Miller was 15-20 for the game as she finished with a game-high 23 points. As a team Winside was 18-27 from the free-throw line while the Lady Knights were just 4-15.

Winside also held an edge in the rebounding department, 54-45. Tracy Topp led the Wildcats with nine rebounds while Carmen Reeg and Ann Meierhenry added eight and seven rebounds apiece. The win improved Winside to 8-3 on the year.

Homer's leading scorers were Melissa Webb and Shelly Beermann with eight points each. Stenwall was happy with the Wildcats defense on Beermann. They held the 5-9 senior way under her average.

In the preliminary game the Winside JV's were also victorious as they downed Homer 31-25. The junior varsity trailed after three quarters but outscored Homer 10-1 in the final period for the win.

Lisa Janke led Winside with 12 points while Cami Behmer added nine markers.

Winside 12 5 16 21-54 Homer 8 2 13 17-40



CARMEN REEG of Winside puts up a shot over Melissa Webb of Homer during the Wildcat's 54-40 win over the Lady Knights. Reeg finished the game with six points.

Table with 5 columns: Player, FG, FT, F, TP. Rows include Miller, Topp, Reeg, Meierhenry, Thies, Totals, and Homer.

Clutch in stretch

Clutch play down the stretch enable the Laurel Lady Bears to win on the road as they got by Hartington 42-37.

The win, which was their fourth in five games, gave the Lady Bears a 7-3 mark on the season.

The game was close all the way through but Laurel held on in the end. The guests came out and played a good first quarter as they outscored the Lady Wildcats 13-8.

A problem developed for the Lady Bears as their leading scorer Gail Twiford was strapped with her second foul with about two minutes to play in the opening period. The senior sat out the remainder of the quarter and all of the second period.

With Twiford on the bench Hartington came back to tie the score at halftime at 20-20.

"I debated about putting Gail back in but I didn't want her to get her third foul before halftime," Laurel Coach Pam Thies said. "I think if she would've played we could have pulled ahead by about 10 points in the second quarter."

Laurel was also without starting guard Penny Dempster. Dempster was forced to miss the game due to illness. Dawn Addison filled in for Dempster and responded with 10 points.

Laurel came out in the third quarter and built a seven-point lead, 34-27, as the teams headed in to the fourth period.

The Lady Bears clung to a two-point lead at 39-37 with 1:58 left to play. Hartington got the ball after a missed free throw with a chance to tie the score. Then freshman Amy Adkins came up with one of the bigger defensive plays of the game when she came up with a steal. Laurel went down and got a basket and for all intents and purposes the game was over.

This said poor rebounding hurt her team. "We got outrebounded bad, she said. "We didn't do a very good job of boxing out and that's something we've been working on in practice."

One Lady Bear who did have a good night on the glass was Becky Christensen. The 27-year-old junior put down 15 rebounds to go with her nine points. Twiford was the game's high scorer with 17 points. Chris Schommer was tops for Hartington with 14 points.

Laurel will be tested Tuesday night when they host Randolph. The Lady Cardinals are second in Class C1 in the latest Omaha World Herald ratings. Thies said Randolph will

Twiford keys Laurel victory

Twiford scored 17 points and led the Lady Bears to a 42-37 win over Hartington Tuesday night.

Twiford's 17 points were the key to Laurel's victory over Hartington. Twiford scored 17 points and led the Lady Bears to a 42-37 win over Hartington Tuesday night.

Good 2nd half propels Wayne girls to win

The Wayne girls broke open a close game in the second half and breezed to a 50-29 win over Stanton Tuesday night.

Wayne Coach Marlene Uhing said she felt the difference in the game was her team's improved play in the second half.

The Lady Blue Devils couldn't get going in the second quarter after a pretty good first period which put them in the lead 13-6. The girls managed only four points in the second stanza to go into halftime with a 17-10 lead.

Wayne committed 16 turnovers in the first half. The locals also had trouble with the Stanton foul-court press. In the second half the Lady Blue Devils committed only three turnovers and handled the press much better. The girls outscored the Fillies 33-19.

Wayne was also able to keep out of foul trouble. The Lady Blue Devils committed only 12 fouls in the game. As a result, Stanton shot just nine free throws, making three. The guests shot 66 percent from the line, converting on 8-12 gift shots.

Wayne also controlled the boards. The girls outrebounded Stanton 46-34. Three girls led the winners in that category. Kecia Corbit was the top rebounder with 14. She was followed by Shelly Pick and Robin Luft with 10

rebounds apiece. Corbit and Pick also led the team in scoring with 14 points each. No other Lady Blue Devil finished in double figures. Tammy Raetz led the Fillies with 13 markers.

The win improved Wayne's mark to 9-1. Saturday the girls will travel to O'Neill for their first conference game. Uhing said O'Neill will be a physical team. She said she hopes conference play will give her team the needed motivation. The girls game will follow the Northern Activities Conference Wrestling Tournament, which the Wayne wrestlers will also be competing in.

The Wayne junior varsity also dumped Stanton on Tuesday by a 34-21 count. Andrea Marsh led the JV's with 10 points. Kristy Hansen added five rebounds.

Wayne Stanton 13 4 14 19-50 6 4 8 11-29

Wayne Nelson 1 0 0 1 2 Luft 2 2 2 3 6 Paige 1 2 2 3 4 Erxleben 2 2 2 1 6 Corbit 7 0 0 14 Pick 7 0 0 14 Diltman 1 1 2 2 3 Marsh 0 1 2 0 1

Totals 21 8-12 12 50 Stanton 13 3-9 14 29

sports slate

Schedule of events for Thursday, Jan. 22 and Friday, Jan. 23, including Wrestling, Boys' Basketball, and Girls' Basketball.

Wayne State women split a pair to go 8-7

The Wayne State Wildcats did something unusual this week. The Lady Cats lost at home and won on the road.

Saturday night Wayne State was outscored 46-40 in the second half and was beaten 52-37 by the Missouri Southern Lady Lions. Monday night the women traveled to Crete and got by Doane 74-69.

The Lady Cats stand at 8-7 on the year. They dropped to 2-2 in the CSC. Coach Lenny Klaver said he thought his team put out a pretty good effort against a talented Southern squad. In the latest NAIA ratings the Lady Lions were 13th in the nation. After Saturday's win their record improved to 10-2 and 1-1 in the conference.

Klaver said the thing that hurt the Lady Cats was they didn't give themselves a chance to win the game in the end. They turned the ball over at some key times in the late going of the game. In all, Wayne State was credited with 29 turnovers. The Lady Cat guards were responsible for 16 of those.

Wayne State's largest lead of the game was five points at 47-42. Five points was also the largest Lady Lion lead.

After the Lady Cats posted the five-point lead, Southern went on a 10-4 spurt and took the lead at 52-51 with 13:30 left to play. The locals recaptured the lead on a three-point field goal by Michelle Blomberg with 4:13 to play but they couldn't hold on to it. Southern hit four free throws in the last 20 seconds to secure the win.

The hosts had three girls in double figures. Dawn Berni led the way with 23 points and 13 rebounds. Linda Schnitzler tossed in 18 points and dished off 10 game-high assists and Mary Beth Ehrhorn added 14 points.

Wayne State will hit the road for a pair of tough conference games. Friday night the Lady Cats will do battle with Washburn. Saturday they will travel Emporia, Kansas to take on Emporia State.

Latifa Rank led the way for the winners with 18 points and 14 rebounds. Monday night the Lady Cats reversed the rolls. They trailed big early and came back in the second half to claim the win.

Wayne State trailed by 11 points at halftime but outscored the Lady Tigers 44-28 in the second half. "Our defense caused them some problems in the second half," Klaver said. "Dawn... Kris (Smith)... and Tonya (Kelley) did an excellent job on defense inside the lane."

The Lady Cats came out aggressively in the second half, and chopped the 11-point lead to a basket at 44-42 with 17:28 to play in the game. Doane remained in the lead and was on top 66-61 with 3:30 to play. At that point the locals outscored Doane 13-3 to finish the game.

Once again Berni led the way with 22 points and 12 rebounds. Blomberg got back on the right track and hit for 17 points, 12 coming from three-point range. Kelley contributed 11 points.

The Lady Tigers did a good job shutting down Wayne State's leading scorer. Schnitzler was held to eight points. It marked the first time this season that the sophomore was limited to single digits.

Klaver said a key to the win was that his team cut down on its turnovers. Wayne State committed only 15 turnovers.

The Lady Tigers were led in scoring by Mary Rainforth and Meri Nienkamp. Each pumped in 13 points. The loss dropped Doane to 6-4.

Wayne State will hit the road for a pair of tough conference games. Friday night the Lady Cats will do battle with Washburn. Saturday they will travel Emporia, Kansas to take on Emporia State.

Winside wrestlers place third; Kants win again

Five of the eight Winside wrestlers earned medals at the Battle Creek Invitational Tournament while the team placed its highest of any tournament this season.

Mace and Max Kant were crowned champions in the 126 and 132 pound weight classes. It was the second consecutive tournament that the Kants have won their class.

At 126 pounds Mace improved his record to 16-2 by beating Mark Minarik of Battle Creek 5-1 in the finals. Max beat Faron Wickert of Battle Creek 14-3 in his final match to go to 17-2 on the year.

Randy Leapley was beaten in the finals by Matt Stahl of Battle Creek 5-1 to finish second. Leapley's record stands at 9-3. Darin Greunke placed third by pinning Jim Johnson of the O'Neill JV team in the consolation finals and Rod Diederichsen finished fourth in the meet.

Host Battle Creek won the tourney with 135 points while the Norfolk JV's finished second with 132 points. Winside was a distant third with 85½ followed by O'Neill JV's, Stanton, Howells, Oakland-Craig, Scribner, Tekamah-Herman JV's and West Point CC.

*112—Open

*119—Lee Maier was pinned by Jeremy Strong (OJV) :36; pinned Shane Miller (NJV) :15; and was pinned by Scott Kirchmann (Sc) 4:00.

*126—Mace Kant pinned Monte Kramelace (St) :38; d/decided David Sidak (OJV) 11:9; and d/decided Mark Minarik (BC) 5:1.

*132—Max Kant pinned Ken Kulhanek (St) 2:52; pinned David Alder (OJV) 1:08; and d/decided Faron Wickert (BC) 14:3.

*138—Darin Greunke was pinned by Curt Mulford (NJV) 2:59; pinned Aaron Musson (OJV) 1:57; d/decided Bob Heller (BC) 11:2; and pinned Jim Johnson (OJV) :40.

*145—Steve Schroeder lost by technical fall to Chris Jenkins (BC) 18:2; d/decided Ron Hall (OJV) 10:7; and was pinned by Ken Johnson (OC) 1:26.

*155—Randy Leapley pinned Don Sindlear (H) :30; won by injury default over Chad Peterson (OC); and d/decided by Matt Stahl (BC) 5:1.

*167—Steve Jorgensen was pinned by Don Kander (St) 3:19.

*185—Rod Diederichsen was pinned by Mike Reese (NJV) 3:28; pinned Chris Kuester (St) :57; pinned Kurt Johnson (NJV) 1:51; and was pinned by Mike Reese (NJV) 1:39.

Results: *98—Open

*105—Open

*Heavyweight—Open

Advertisement for NEBRASKALAND GLASS, The Auto Glass... Pro's. Includes phone number 379-1007 NORFOLK.

Advertisement for Thinking of Buying or Selling a Home? Contact Kay Marsh, Sales Counselor. Includes phone number 375-4144.

Advertisement for H&R Block, THE INCOME TAX PEOPLE. Includes phone number 375-4144.

Advertisement for MAKE PHOTO MEMORIES AND SAV-MOR. Includes COLOR PRINT FILM DEVELOPING prices and contact information for Sav-Mor Pharmacy.

Area high school cheerleaders



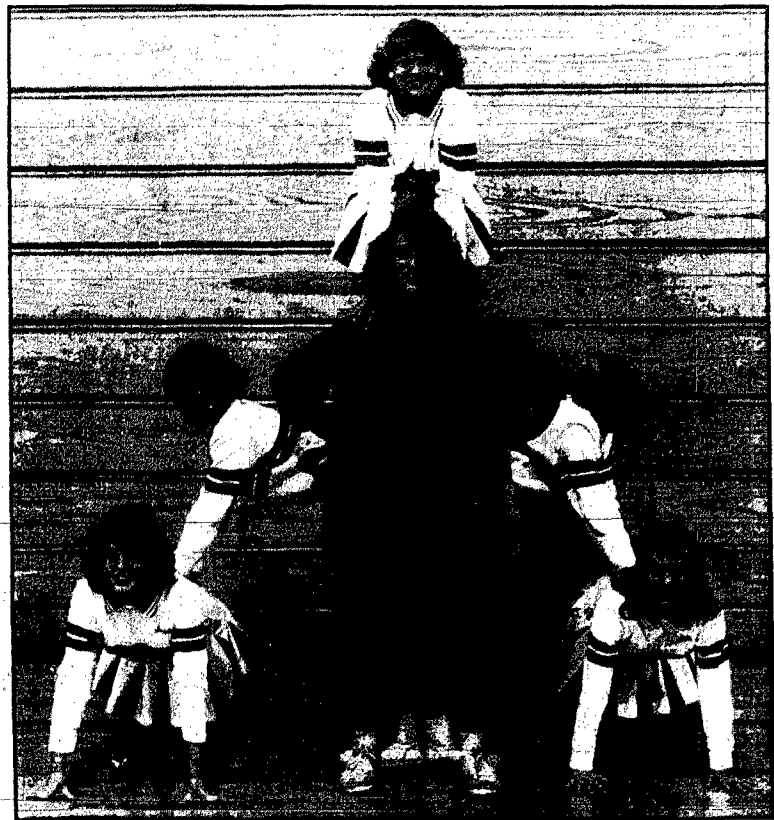
CHEERLEADERS AT Wayne High School are: (back row, left to right) Kelly Fleming, Kelli Frye, Diana Kramer, Kathy Mohfeld and Tracy McFarland; (middle) Eunice Wacker (capt.) and Kristy Bahns; (front) Tiffany Benson, Deana Nichols and Melinda Olson. Not pictured are: Kim Backstrom, Kara Janke and Melisa Johnson.



CHEERLEADERS AT Winside High School are: (standing, left to right) Christi Thies, Connie Smith and Tracy Topp (capt.); (top) Tricia Hartman; (kneeling) Tina Hartman; (front) Lisa Janke.



CHEERLEADERS AT Wakefield High School are: (standing, left to right) Julie Greve, Karen Hallstrom, Lana Ekberg, Steph Torczon and Cathi Larson; (kneeling) Marci Greve (capt.), Linda Greve and Racquel Lueth; (seated) Jessica Robbins.



CHEERLEADERS AT Laurel High School are: (left to right) Jessie Monson, Emily McBride, June Heydon, Donna Herrmann and Kaea Long; (top) Holli Helgren (capt.).




CHEERLEADERS AT Allen High School are: (back row, left to right) Kristi Chase, Amy Noe, Tiffany Harder, Jan Kavanaugh and Pam Kennelly; (front row) Brenda Fiscus, Richelle Greenough, Noelle Hinrickson, Terri Ellis and Enean Mattes.

375-1404

SUPER BOWL TICKET

The bearer of this ticket intends to really enjoy the NFL Super Bowl on Sunday with W.C. Corn's Special 30-Oz. Bag of White Gourmet Popcorn

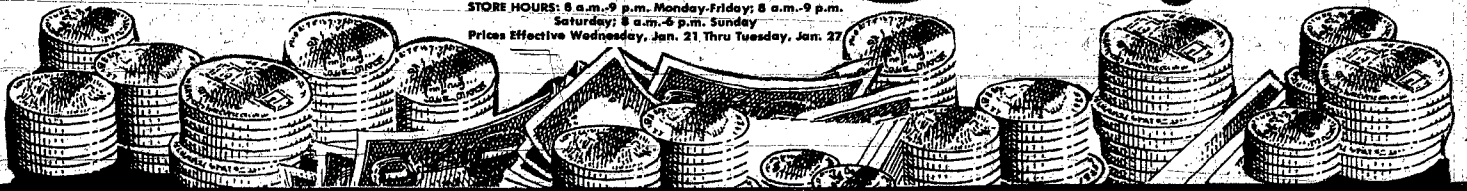


This ticket + \$2.75 entitles bearer to be the bowl winner with 30-oz. W.C. Corn's White Gourmet Popcorn.

ORDER OR PICK UP NO LATER THAN SUNDAY NOON, JAN. 25, 1987

storewide savings days STRETCH FOOD DOLLARS

STORE HOURS: 8 a.m.-9 p.m. Monday-Friday; 8 a.m.-9 p.m. Saturday; 8 a.m.-6 p.m. Sunday
 Prices Effective Wednesday, Jan. 21 Thru Tuesday, Jan. 27



PRODUCE VALUES

Fresh PINEAPPLE
 89¢ Ea.

Imported Red Seedless GRAPES
 99¢ Lb.

GREEN ONIONS
 Bunches
 4 FOR 79¢

California Pascal CELERY
 Stalk
 49¢

New Sweet CARROTS
 1-Lb Pkgs.
 4 \$1.00 FOR

Idaho Russet POTATOES
 10-Lb. Bag
 \$1.29

DAIRY VALUES

Gillette SOUR CREAM
 16-Oz. Cin. 89¢

Shurfresh HALF & HALF
 Pint 49¢

Gillette 1% MILK
 Gal. \$1.69

Blue Bunny 100% Pure ORANGE JUICE
 1/2-Gal. 99¢

Parkay Quartered MARGARINE
 1-Lb. Pkg. 39¢

Kraft American & Swiss Singles CHEESE
 12-Oz. Pkg. \$1.49

SPARKLING COOLERS

La Croix Strawberry SPARKLING COOLERS
 6-Pack 12-Oz. Bottles Reg. \$3.69
 \$2.29

Regular & Light OLD MILWAUKEE
 24 Loose Pack 12-Oz. Cans
 \$6.59

FROZEN FOOD VALUES

Jeno's PIZZA
 Canadian Bacon, Pepperoni, Hamburger, Sausage & Combo
 89¢ 10-Oz. Pkg.

Nature Ripe Frozen STRAWBERRIES
 99¢ 16-Oz. Bag

Gillette - All Flavors ICE CREAM
 \$2.88 3-Qt. Bucket

QUALITY meats

100% Pure 75% Lean
GROUND BEEF 89¢ Lb.
 No Retailers Please

GROUND CHUCK \$1.49 Lb.

Shurfresh Sliced LUNCHEON MEATS \$1.09 12-Oz. Pkg.

Farmland - Thick or Thin Sliced BACON \$1.59 Lb. Pkg.

Whole Grade A CHICKENS 57¢ Lb.

Family Pack FRYERS 55¢ Lb.

John Morrell All Meat FRANKS 85¢ 12-Oz. Pkg.

Wimmer's Skinless WIENERS \$4.59 2 1/2-Lb. Bag

Lean Boneless STEW BEEF \$1.49 Lb.

Hormel LITTLE SIZZLERS \$1.09 12-Oz. Pkg.

Maple River BACON \$1.29 Lb. Pkg.

Gorton's Crunchy FISH STICKS \$2.49 20-Oz. Pkg.

Wimmer's POLISH SAUSAGE \$2.29 Lb.

Jimmy Dean PORK SAUSAGE \$1.89 12-Oz. Roll

Wimmers SLIM GEMS \$2.09 11-Oz. Stick

Family Pack CHICKEN LEGS or THIGHS 69¢ Lb.

Tyson CHICKEN CHUNKS \$2.49 12-Oz. Pkg.

Always Fresh RING BOLOGNA \$1.39 Lb. Ring

PORK STEAK \$1.29 Lb.

Boston Butt PORK ROAST \$1.09 Lb.

Farmland PICNIC HAM 89¢ Lb.

MINUTE STEAKS \$1.99 Lb.

DEL VALUES

Wimmer's SUMMER SAUSAGE \$2.69 Lb.

John Morrell LARGE BOLOGNA 99¢ Lb.

John Morrell BRAUNSCHWEIGER 79¢ Lb.

ROASTED CHICKEN \$4.99
 With 2 99¢ Salads or 4 French Fries -- \$6.19

FRENCH FRIES
 Deep Fried While You Wait!
 Large Serving 65¢ Double Large Serving \$1.30

Shurfine Buttertop White & Wheat BREAD
 1 1/2-Lb. Loaf 69¢

Nature Harvest White or Wheat BUNS
 12-Ct. Pkg. 79¢

Old Settlers White & Wheat BREAD
 1-Lb. Loaf 59¢

Plantar NUTS
 Honey Roasted, Dry Roasted or Cocktail
 12-Oz. Can \$1.49

BILL'S GW DRY CLEANING DEPARTMENT
 Monday thru Friday
 Same Day Service if Needed

Register Thru Thursday
 Drawing Thursday Evening for
FREE \$50 WORTH OF GROCERIES

BONUS BUCKS DRAWING
 In Our Store Every Thursday Night

Kitty Clover POTATO CHIPS
 Triple Pack 12-Oz. Bag \$1.29

Check Out Bill's GW BOOK NOOK
 Located in the Ice Cream Parlor
10% OFF
 All Greeting Cards & Books

RC COLA, CHERRY RC & DIET CHERRY RC
 6-Pack 12-Oz. Cans \$1.39

Keabler Zesto Saltine CRACKERS
 16-Oz. Box 79¢

Franco-American SPAGHETTI'S
 14 1/4-Oz. Cans 2/88¢

Kraft Macaroni & Cheese DINNER
 7 1/4-Oz. Pkg. 2/88¢

Campbell's Homestyle Chicken Noodle or Homestyle Vegetable SOUP
 10 1/2-Oz. Cans 2/90¢

DORITOS
 Nacho Cheese, Toasted Corn, Cool Ranch
 11-Oz. Pkg. Reg. \$2.29
 \$1.59

Shurfine Early June PEAS
 17-Oz. Cans 4/\$1.00

BILL'S **AFFILIATED** Member of
 Owned & operated independently by Lueders, Inc. Cooperativo, Inc.


4,000 REASONS TO SHOP WAYNE

Check the specials in each merchants ad — then clip each coupon and deposit in the named store. Each week 1 will be drawn each week for 8 weeks. These people will be eligible for the Grand Prize Drawing to be held Sat Arizona • Florida • Bermuda • Hawaii • Boat Excursion through the Virgin Islands (value up to \$3,000) 2nd Priz

• Limit one winning name per family • No purchase necessary

IRA

A Brilliant Deduction



Columbus Federal SAVINGS BANK

220 West 7th St. Wayne, NE
375-1114

COLUMBUS FEDERAL

NAME _____

ADDRESS _____

COLUMBUS FEDERAL

Washable



SAVE \$6

Latex Flat Wall Paint

Soft 8.99

Colorfast latex dries to a spot-resistant, washable matte finish. One coat coverage. Over 1,100 decorator colors! Gallon. (550-6068 thru 6142)

Coast's Finest



SAVE \$5

Acrylic Latex Flat Enamel Paint

Soft 11.99

Softer look for walls and woodwork! Washable, colorfast latex enamel is spot and stain resistant. Dries fast. Easy clean up. 1,100 colors! Gallon. (550-6019, 6077, 6308 thru 6377)

Durable Washable



SAVE \$4

Latex Semi-Gloss Enamel Paint

Soft 13.99

Our best latex enamel. Dries hard and satin-smooth. One coat coverage. 1,110 decorator colors! Gallon. (549-6021 thru 6104)

Coast to Coast

Jack & Leslie Hausmann - 375-4790 121 Main - Wayne

COAST TO COAST

NAME _____

ADDRESS _____

COAST TO COAST

LES' STEAK HOUSE

120 West 2nd Wayne, NE
375-4774

Come watch the Super Bowl with us

open at 3 p.m.

75¢ bar drinks — free hors d'oeuvres

WEEKLY SPECIALS

MONDAY — Private Parties
TUESDAY — Chicken Strip, Salad & Potato — \$4.45
WEDNESDAY — 8-Oz. Sirloin & Potato — \$3.95
THURSDAY — Old Fashioned Fried Chicken, Slaw & Vegetable — \$3.45
FRIDAY — Fish Fry — \$2.00
Halibut — \$4.95
SATURDAY — Prime Rib, Salad & Potato
Small — \$5.95 Large — \$6.95
SUNDAY — Our Surprise!

LES' STEAKHOUSE

NAME _____

ADDRESS _____

LES' STEAKHOUSE

Arnie's FORD-MERCURY 119 East Third Wayne, Nebraska 375-3760

Home Of The Taurus 1986 Motor Trend's Car of the Year

And Thunderbird 1987 Motor Trend's Car of the Year

No other car company has ever won the Motor Trend Car of the Year two years in a row.

See Them Both Now!
Financing As **3.9%**
Low As
Cash Incentives Up To \$600.00

ARNIE'S FORD-MERCURY

NAME _____

ADDRESS _____

ARNIE'S FORD-MERCURY

Koplin Auto Supply, Inc.

213 West 1st St. Wayne, NE
375-2234

- Automatic, Truck and Tractor Parts
- Automotive Machine Shop Service
- Small Engine Parts and Repair Service

"Authorized Tecumseh, Briggs & Stratton, Clinton Service Dealer"

KOPLIN AUTO SUPPLY


NAME _____

ADDRESS _____

KOPLIN AUTO SUPPLY

Wayne Municipal Utilities

Electric, Water, Waste Water & Solid Waste



NEBRASKA

Be Sure To Shop Wayne For All These Money Saving Bargains

THE LUMBER CO.

Restaurant Lounge & Package
113 So. Main — 375-1463

Enjoy Lunch At The Lumber Company

Daily Noon Specials



Evening Specials

Prime Rib Served Nightly

THE LUMBER CO.

NAME _____

ADDRESS _____

THE LUMBER CO.

Catch a Captive Audience!

If they've got the newspaper in their hands, your message is there too — easy to read, easy to use.

Catch readers interested in what you've got to say with a classified ad.

CLASSIFIEDS WORK!

375-2600

THE WAYNE HERALD

375-2600 — 114 Main
Mon.-Fri. 8:00-5:30 — Sat. 8:00-Noon


THE WAYNE HERALD

NAME _____


ADDRESS _____

THE WAYNE HERALD


NEW LISTINGS! Investment Properties



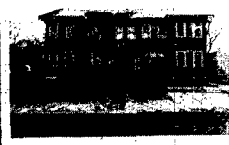
2 bedroom, fireplace, full basement, single garage.



Fireplace, oak woodwork, extra nice modern home, 4 bedroom.



Testfully decorated, 2 bedroom, 2 baths, clean and neat, appealing kitchen.



5 units, good location.

SOLD

New Farm Listing —
240 acre NE of Carroll — irrigated.
140 acre NE of Carroll.

Century 21 REALTY

CENTURY 21

NAME _____

ADDRESS _____

CENTURY 21

laurel news

mrs. gary lute 256-3584

farm briefs

dixon news

mrs. doreen ... 584-2388

FARMERETTES EXTENSION CLUB

The Farmerettes Extension Club from Laurel met in the home of Mrs. Lili Twilford on Jan. 13 with 10 members in attendance...

Members were encouraged to place the date of the annual Spring Salad Day on their calendars. It will be held on Thursday, April 23 at 12:30 at Hartington...

The next meeting will be held in the home of Mrs. Lillian Halsch on Tuesday, Feb. 10 at 2 p.m.

CONTEMPORARIES CLUB The Contemporaries Extension Club from Laurel met in the home of Mrs. Mary Dickey on Jan. 14 for a Salad Luncheon...

Evangelical Church (John Meyer, pastor) Sunday, Jan. 25: Bible classes, 9:30 a.m.; worship service, 10:30 a.m.; evening service, 7:30 p.m.

the farmer's wife

The dinner-table conversation today had to do with the choir number at church. It seems that when I hit the last note, an E, the whole row of teen-agers sitting with Ann convulsed in laughter.

I admit I hit it kind of hard. Our little WSC student director has learned to choose simple anthems and this one was great. It was two-part, men and women, and fun to sing. I only made it to one rehearsal, so I was kind of tentative. But that E, was at the end of a progression up and a natural finale. So I got carried away!

I've always had a loud voice that has embarrassed by kids. I also have a tendency to sing harmony, alto or high tenor, which makes them slither away from me in the pew.

They are equally critical of my organ playing. I admit I'm not a great keyboard player. I didn't practice much when I was taking piano lessons. My fingers are short and not long and tapered the way they need to be. And playing the piano does not

Immanuel Lutheran Church

Thursday, Jan. 22: Seraphims, 3:45 p.m.; Symposium on the Lutheran Confessions at Ft. Wayne Lutheran Sat. Sunday, Jan. 25: Sunday school, 9 a.m.; ABC (Gen.) 9 a.m.; worship service, 10 a.m.; Family Life 'Shepherd's Group, Focus on the Family IV, 7:30 p.m.

Presbyterian Church Sunday, Jan. 25: Sunday school, 9:30 a.m.; worship service, 10:45 a.m.

St. Mary's Catholic Church (Father Norman Hunke) Saturday, Jan. 24: Mass, 7 p.m. Sunday, Jan. 18: Mass, 10 a.m.

United Lutheran Church (Kenneth Marquardt, pastor) Sunday, Jan. 25: Sunday school, 9 a.m.; worship service, 10:15 a.m. Monday, Jan. 26: Bethel, 7:30 p.m. Tuesday, Jan. 27: SEARCH, 9:45 a.m.

Wednesday, Jan. 28: Confirmation, 7 p.m.; Bethel, 7 p.m.; SEARCH, 7:30 p.m.

United Methodist Church (Fred Andersen, pastor) Sunday, Jan. 25: Sunday school, 9:30 a.m.; worship services, 10:45 a.m.; Homebuilders, 7:30 p.m. Monday, Jan. 26: Faith Circle, 7:30 p.m.

Wednesday, Jan. 28: Adult choir, 8 p.m.

Leadership conference scheduled

The Nebraska Farm Bureau is sponsoring a Young Farmers and Ranchers Leadership Conference on Jan. 23-25 at the New World Inn, Columbus. Banquet speaker on Friday evening will be Bryce Neidig, Nebraska Farm Bureau president.

Conference topics will include using options in the marketing plan, cash-flow planning, legislation affecting young farmers and ranchers, how to be an effective lobbyist, and how to develop a successful young farmer and rancher program.

Farm Bureau members under age 35 are eligible to participate in the program. Those interested in attending are asked to register with the Farm Bureau office in Allen, 635-2166; or Mrs. Dale Jackson, 635-2341. There will be some financial assistance available for those wishing to attend.

Livestock feeders to meet

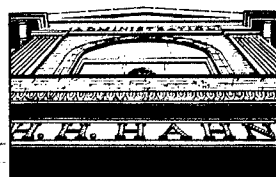
On Tuesday, Jan. 27, the Northeast Nebraska Livestock Feeders Association will hold their membership meeting at the Black Knight Steakhouse in Wayne. Social hour will begin at 6:30 p.m. with dinner at 7:30 p.m. All feeders, spouses and guests are invited to attend. For those individuals renewing memberships or joining the association, the evening meal will be provided free of charge for the member (and spouse).

In addition to the business meeting, a representative from Syntex Animal Health, Inc. will sponsor part of the meal and be on hand to discuss animal health products.

The Auxiliary will also be meeting at this time. Individuals interested in joining are invited to attend. An associated membership in the Northeast NLFA is not required to join the Auxiliary.

If you are unable to attend, but wish to join or renew your membership, please contact your local board member or Roger Tremayne at Walthill (846-5355).

Building a Foundation for the Future



WAYNE STATE COLLEGE

Business Partners

- A B Dick Products Co., Sioux City, IA
Alice's Country Tavern
Allied Sales & Service
Arnie's Ford Mercury Bank of Norfolk
Barr's, Norfolk
Benthack Clinic
Bill's GW
Black Knight
Carhart Lumber Co., Wayne
C & D Garbage
Chief Industries, Grand Island
Coast to Coast, Wayne
Coryell Derby Service

- Fredrickson Oil Co., Wayne
Gay Theatre
Godfather's Pizza, Wayne
Greenview Farms
Hartman Keyboards
Hollywood Videos
IDS Financial Services, Wayne
K-D Inn
Kent's Photo Lab
Koplin Auto Supply
Kuhn's Carpet-Draperly

- Olte, Swarts & Enz Otte Construction
PoPo's II
Restful Knights
Rusty Nail
Sav Mor Pharmacy
7-11 Store of Wayne
Seymour, Inc.
Spethman Plumbing
State National Bank, Wayne

DISCOUNT FURNITURE'S

FURNITURE SAVINGS

SALE

SOFAS

The Greatest Savings Ever

Reg. \$399.95 RUSTI & BROWN STRIPE SOFA Nylon Cover. You Take It Home For \$199.95

Reg. \$1,349.95 LIVING ROOM GROUP Wood Arm Sofa w/ Matching Chair & Ottoman Only \$699.95

Reg. \$549.95 3-PC. LIVING ROOM GROUP Regularly \$549.95. Sofa, Matching Chair & Ottoman Only \$299.95

Reg. \$920.00 MASTERCRAFT SOFA w/Solid Oak Trim. Nylon Rust Stripe Cover. Quality For Only \$499.95

Reg. \$699.95 CONTEMPORARY SOFA w/Pub Back & Arms Only \$499.95

Reg. \$569.95 Nylon Velvet Floral Covered SOFA Only \$349.95

Reg. \$799.95 EARLY AMERICAN SOFA w/Wood Trim. Nylon Cover. Don't Miss This Sale. Only \$399.95

Reg. \$599.95 Charles Schneider Sleep-Sofas QUEEN SIZE SLEEPERS Extra Special. Your Choice Only \$399.95

ROCKERS

Choose a Swivel Rocker & Relax in Comfort.

Only \$125.00 & Up

RECLINERS

Recliners - Rocker Recliners - Wallaway Recliners -

2-Way Recliners Starting At Only \$169.95

BEDROOM

Solid Oak 3-Pc. BEDROOM SET Includes Dresser w/Mirror, 5-Drawer Chest & Headboard. Reg. \$1,159.95

Now Only \$879.95

Reg. \$979.95 BEDROOM SET Large Triple Dresser w/Hutch Mirror, 5-Drawer Chest, Bookcase Headboard. All For Only \$679.95

Reg. \$529.95 WOOD DINETTE SET Includes Table w/Formica Top, 4 Chairs. Light Finish. All Solid Wood. Only \$379.95

See These & Many Others At Greatly Reduced Prices.

DISCOUNT FURNITURE

Your Furniture Headquarters For N.E. Nebraska 1 1/2 Miles North of Wayne - Phone 375-1885 Free Delivery

WAYNE STATE COLLEGE OF NEBRASKA

January 15, 1987

Dear Friends of Wayne State:

Thanks to those businesses who have enrolled in the Wayne State Business Partners Program, I am gratified with the response from this first year of the program. With the enrollment drive culminates on February 28, 1987 and each day brings in more enrollees with their contributions of \$200 or more. Their support is directly used to maintain and improve our program's provide support for our students, and, to help meet a dollar-for-dollar matching grant of \$50,000 from a major corporate foundation.

I encourage our students, staff, faculty, alumni, parents and friends to help create a more prosperous regional business climate while, at the same time, supporting our college. When you plan to purchase goods or services please first consider doing business with a Wayne State Business Partner. Clip and save this list, visit their places of business, and thank them for supporting our college. Their generosity and recognition of Wayne State College is evidence of their commitment to work together to keep Northeast Nebraska a very special place in which to live, work, learn and prosper.

Sincerely, Dr. Thomas A. Coffey, President

- Dairy Queen, Wayne
Edward D. Jones Co., Norfolk
Edward D. Jones Co., Wayne
Ellington Motors
El Toro
Energy Systems Co., Omaha
ERA Property Exchange, Wayne
Farm Bureau Insurance, Wayne
Final Touch
First National Bank, Wayne
Fletcher Farm Service
Kuhn's Logan Valley Implement
Jerry L. Malcom, CPA
Magnuson Eye Care
McBride-Wiltse Mortuary
McDermott & McDermott
Milton G. Waldbaum & Co.
Morning Shopper
Mrsny Sanitary Service
Norwest Bank, Norfolk
Northwestern Mutual Life, Wayne
Occidental-Nebraska Savings & Loan, Wayne
Office Connection
State National Insurance, Wayne
Surber's
Swan's Womens Apparel
3M Plant, Norfolk
Timpke, Inc.
Tom's Body & Paint Shop
Trio Travel
TJW Farms
Wakefield Drug
Wayne Family Practice
Wayne Greenhouse
Wayne Herald
Wayne Shoe Co.
Wayne Kelgus, Inc.
Wayne Vet Clinic
Wayne Vision Center
W.E. Wessel, DDS

Asterisks denote businesses and professional services which are members, or whose owners are members, of the Wayne State College Presidents Society.

The Presidents Society

- Associate Member (Individual \$500-\$999)
Associate Corporate Member (\$2,500-\$4,999)
Full Member (Individual \$1,000-\$2,499)
Full Corporate Member (\$5,000 & above)

4,000 REASONS TO SHOP WAYNE

Check the specials in each merchants ad — then clip each coupon and deposit in the named store. Each week th will be drawn each week for 8 weeks. These people will be eligible for the Grand Prize Drawing to be held Satur Arizona • Florida • Bermuda • Hawaii • Boat Excursion through the Virgin Islands (value up to \$3,000) 2nd Prize •Limit one winning name per family •No purchase necessary

Engine Tune-Up
For most cars with Electronic Ignition Systems.

GOODYEAR

\$59 \$69 \$79
4-cyl 6-cyl 8-cyl

• Check battery, starting, charging, combustion systems. Install new spark plugs • Set timing • Adjust carburetor where applicable. (Extra charge if removal is necessary.)

SAVE ON TIRES FOR PICKUPS, VANS, AND RVs
\$54.95

OUR PRICE ON WHITE LETTER RADIALS
\$72.55

CORYELL DERBY SERVICE
211 LOGAN STREET WAYNE, NEBR.

NAME _____
ADDRESS _____

Gillette
Denver Bronco's
Ice Cream
5-Qt. Bucket
Vanilla Only
\$2.88

Jeno's Pizza
Combination, Hamburger, Sausage, Canadian Bacon, Pepperoni
89¢

BILL'S
Owned & operated independently by Lueders, Inc.

NAME _____
ADDRESS _____

WEEKLY SPECIAL

Hi-Dri Paper Towels
Jumbo Rolls
2/99¢

BEN FRANKLIN
207 Main, Wayne 375-2345

NAME _____
ADDRESS _____

The State National Bank
for your home improvement loan...

If ready cash is the only thing standing in the way between you and those home improvements, then see us. On approval, we can lend you the money you need to make the repairs or renovations you want at workable payment terms and low rates.

A FULL SERVICE BANK

The State National Bank and Trust Company
Wayne 375-2345 • 402 375-1100 • Market Place
Main Bank 116 West 1st • Drive In Bank 10th & Main

NAME _____
ADDRESS _____

See That Your Children Can See Well
50% of reading problems in children can be attributed to undetected visual problems. Our thorough eye examinations can spot any eye trouble your child may have and also determine your child's prescription if needed.

WAYNE VISION CENTER
313 Main St. Wayne 375-2020

NAME _____
ADDRESS _____

GRIESS REXALL

VITAMIN C
500 MG 100's
\$1.19

VITAMIN E
400 Units 100's
\$2.49

CALCIUM WITH VITAMIN D
250 MG 100's
\$1.99

WITH THIS COUPON
FREE POSTAL STAMP WITH EVERY VALENTINE CARD PURCHASED
EXPIRES JAN. 31, 1987

NAME _____
ADDRESS _____

WINTER SAVINGS
NEW GAS GRILLS: HIGH TECH AT ITS BEST.

• Total, instant temperature control
• Unbeatable outdoor flavor
• Grills, broils, bakes, roasts and smokes all kinds of food
• So easy, you'll want to cook outside and keep your kitchen cool.

Peoples Winter Savings Price — \$2000 Off

Gas: America's best energy value

PEOPLES NATURAL GAS
208 Main St. Wayne 375-1411

NAME _____
ADDRESS _____

January CLEARANCE Sale

MEN'S

- Jackets 1 Rack \$20-\$25
- Shirts 1 Group \$9.99
- Sweaters 1 Group \$12.99
- Sweater Vests \$12 to \$15.00
- Shoes Save 30% to 50%
- Ties 1/2 Price
- Belts 1/2 Price
- Arrow Dress Shirts 1/2 Price
- Jeans \$12.99
- Wool Slacks Save 25%

WOMEN'S

- Coats Save 30% to 50%
- Blouses 1/2 Price
- Flocco Sweaters 1/2 Price
- Fashion Sweaters Save 20% to 50%
- Dresses 30% to 80% Off
- Sweater Skirt & Top Reg. 44.99 Now \$33.50
- Flocco Jackets \$12.50 - \$14.50 - \$21.50
- Coordinate Sportswear Save 25% to 50%

SURBER'S
202 MAIN STREET

NAME _____
ADDRESS _____

Ellingson MOTORS, INC.
214 West 1st • Wayne, MI 375-2355 • Wayne: 1-800-642-4402

1985 Olds Calais Supreme, 2.5 liter, 4 cylinder, automatic, tilt, cruise, AM/FM cassette, power windows, power locks, luggage rack, aluminum wheels, one owner, low mileage, excellent condition.
Salo Price \$6350

1985 Buick Skylark, 4 cylinder, automatic, air conditioning, power steering, power brakes, super nice economy car.
Salo Price \$6350

1985 Chevrolet Chevette, 4 cylinder, automatic, air, AM/FM stereo, rear window defogger.
Salo Price \$4675

1984 Camaro Z-28, V8, automatic, tilt, cruise, AM/FM stereo, rally wheels, local one owner, only 19,000 miles.
Salo Price \$9450

1978 Olds Delta 88 Luxury Sedan, V8, automatic, tilt, cruise, AM/FM stereo, power seat, power windows, power locks, vinyl top, a super sharp one owner with only 35,000 miles.
Salo Price \$5450

NAME _____
ADDRESS _____

4,000 REASONS TO SHOP WAYNE

Coupons will be gathered and a drawing will be held Tuesdays at 10:00 A.M. at Daylight Donuts. Two names will be drawn each week. The winner will receive a FREE TRIP FOR TWO to either •Las Vegas •Aspen Colorado •Phoenix or •San Francisco. All winners will receive \$1,000 in Vacation Bucks to be spent in any of the participating stores. If you are the grand prize winner and your name is on a newspaper coupon — you will receive a BONUS — A COMPLETE SET OF TRAVEL LUGGAGE!

PRICES GOOD THRU JAN. 28

Old Milwaukee
or Light
Warm - Case
\$6.75
Tax .27
\$7.00

Bartles & James
Wine Coolers
4-Pack
\$3.17
Tax .13
\$3.30

3 Cases
For \$20.00



Canadian Black Velvet
1.75 Liter

Zoni-Moscato Wine
750 ml

\$11.54
Tax .46
\$12.00

3 For \$9.00
Tax .13
\$3.30

\$3.00
Rebate
Coupon

Coupon - \$3.00
\$9.00

The 4th JUG

1117 Main 375-9958

THE 4th JUG

NAME _____
ADDRESS _____

THE 4th JUG



Valentine's Day Update:

With the purchase of that very unique gift that only The Diamond-King can offer — receive a free gift. Come in today — a new idea and a free gift from The Diamond Center.

The Diamond Center

211 Main St. Wayne, Nebraska 68787
405-373-1884



FINE JEWELRY
WHEN
YOUR FEELINGS
ARE FOR REAL.



Special care goes into the selection of fine jewelry. Your own very personal feelings. And your jeweler's expert knowledge. That's why there's no better way to express your true sentiments than with a gift of fine jewelry.

Member
Jewelers of America, Inc.
© 1987 Jewelers of America, Inc.

THE DIAMOND CENTER

THE DIAMOND CENTER

THE DIAMOND CENTER

NAME _____
ADDRESS _____

THE DIAMOND CENTER



JOE LOWE REALTY

RESIDENTIAL — COMMERCIAL — FARMS

120 West 3rd Wayne, NE Ph. 375-4500

JOE LOWE REALTOR — Res. Phone 375-2817



PRICE REDUCED!

Near new 3 bedroom home. Totally carpeted upstairs and down. 2 full baths. Fully insulated. Central air. Dishwasher, disposal and many other extras. Located close to shopping center. SEE IT TODAY!

JOE LOWE REALTY

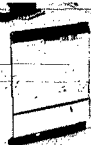
JOE LOWE REALTY

JOE LOWE REALTY

NAME _____
ADDRESS _____

JOE LOWE REALTY

PRESENTING THE NEW CLASSICS
IN QUALITY DISHWASHERS



THE CLASSIC
SERIES BY
IN-SINK-ERATOR

In our 50th year of producing quality kitchen products, we're proud to introduce this spectacular new line. The Classic Series represents the very latest in dishwasher technology. And because they're from In-Sink-Erator, you can expect the utmost in quality, dependable performance and service availability.

In-Sink-Erator continuous and batch feed disposers are famous for long life. Durability. Quiet operation. And they're backed by one of the industry's largest, most complete service networks. We put a lot into our disposers. And it shows.



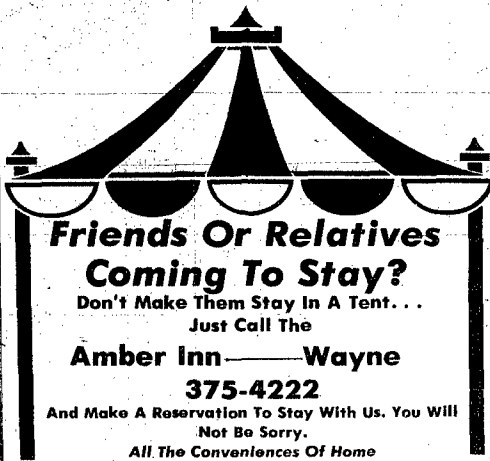
CHARLIE'S REFRIGERATION & APPLIANCE SERVICE

311 MAIN WAYNE 375-1811

CHARLIE'S REFRIGERATION

NAME _____
ADDRESS _____

CHARLIE'S REFRIGERATION



**Friends Or Relatives
Coming To Stay?**

Don't Make Them Stay In A Tent...
Just Call The

Amber Inn — Wayne

375-4222

And Make A Reservation To Stay With Us. You Will
Not Be Sorry.

All The Conveniences Of Home

THE AMBER INN

E. Hwy. 35 Wayne, NE 68787

THE AMBER INN

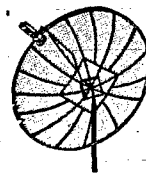
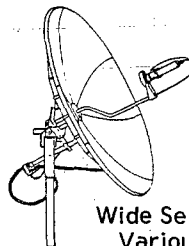
AMBER INN

THE AMBER INN

NAME _____
ADDRESS _____

AMBER INN

See Us Now For
Fiberglass or Mesh
Satellite TV Dishes



Wide Selections Available
Various Sizes In Each
Complete Installation and Service.

T & C Electronics

311 Main Wayne Phone 375-4484

T & C ELECTRONICS

T & C ELECTRONICS

T & C ELECTRONICS

NAME _____
ADDRESS _____

T & C ELECTRONICS

SUPER BOWL SPECIALS

Doritos
1-lb.
Reg. \$2.69
SALE
\$1.99



12-Pack Pop
• Coke • Diet Coke
• Cherry Coke • 7-Up
• Diet 7-Up
\$2.99



PAMIDA

Last Hwy. 35 - Wayne, Ne

PAMIDA

NAME _____
ADDRESS _____

PAMIDA

**DISCOUNT
FURNITURE**

1 1/2 MILES NORTH - WAYNE
PHONE 375-1885

Regular \$299.95

**Ortho-Pedic Imperial
Mattress & Box Spring**
Regular Size

Only

\$189⁹⁵ Set

DISCOUNT FURNITURE

DISCOUNT FURNITURE

DISCOUNT FURNITURE

NAME _____
ADDRESS _____

DISCOUNT FURNITURE

Visit Us Soon!

Every Day Soup
and Sandwich

Saturday Night Special
8-Oz. Sirloin
Potato, Salad, Roll

\$4.50

2 For \$7.95



EL TORO

611 N. Valley Dr.
Wayne 375-2636

EL TORO

EL TORO

EL TORO


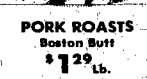
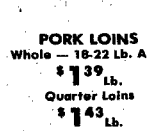
NAME _____
ADDRESS _____

EL TORO

4,000 REASONS TO SHOP WAYNE

coupons will be gathered and a drawing will be held Tuesdays at 10:00 A.M. at Daylight Donuts. Two names a day, March 14. The winner will receive a FREE TRIP FOR TWO to either •Las Vegas •Aspen Colorado •Phoenix will receive \$1,000 in Vacation Bucks to be spent in any of the participating stores.
 you are the grand prize winner and your name is on a newspaper coupon — you will receive a BONUS — A COMPLETE SET OF TRAVEL LUGGAGE!

SUPER VALUE MEATS

	PORK STEAK Blade Cut \$1.47 Lb.	CHOICE BEEF LOINS 30 Lb. Avg. \$1.76 Lb.
	PORK ROASTS Boston Butt \$1.29 Lb.	BEEF ROASTS Arm Cut \$1.59 Lb. #7 Cut \$1.29 Lb.
	PORK LOINS Whole — 18-22 Lb. Avg. \$1.39 Lb. Quarter Loins \$1.43 Lb.	WILDIFF (Processed) SUMMER SAUSAGE Chunk \$2.39 Lb.

GROUND BEEF
80% Lean
\$1.29 Lb.
Quantity Orders
\$1.24 Lb.

Johnson's Frozen Foods
116 West 3rd Wayne 375-1100

NAME _____
ADDRESS _____

Special of the Week

Potscrubber Dishwasher

with Temperature Sensor System



- Temperature Sensor System automatically heats the water during the main wash cycle to get your dishes sparkling clean, using water temperatures as low as 120°F.
- Energy saving drying cycle.
- Pre-cycle selections including POTSCRUBBER cycle.
- Energy saving drying cycle.
- Big capacity Super Rack.
- Reversible color panels.

See Us For Special Prices This Week Only

GE. We bring good things to life.

Doescher's Appliance

306 Main 375-3683

NAME _____
ADDRESS _____



SERVICE DEPARTMENT
Stop in or call us for all your mechanical needs. We have FREE pick up and delivery!

POP
6 Packs of Cars
\$1.99

MUFFLERS
Protection
• FREE ESTIMATES
• Most Cars & Light Trucks

CAR WASH
\$10.00 Cars
\$15.00 Trucks & Vans
Inside & Out

Let Us Winterize & Tune-Up Your Car NOW for the Cold Weather Ahead!

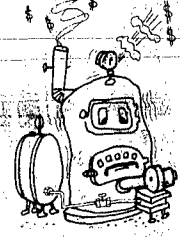
CLARKSON SERVICE

614 Main Wayne Phone 375-4420

NAME _____
ADDRESS _____

Time for a Change?

A worn out furnace loses efficiency and wastes your fuel dollars. Replace that old plunker with a new, energy saving Lennox heating system. Call us today.




LENNOX
AIR CONDITIONING • HEATING

Skelgas of Wayne

305 S. Main 375-3555

NAME _____
ADDRESS _____



PROPERTY EXCHANGE

112 Professional Bldg.
Wayne, NE 68787
375-2134

Broker: Darrel Fuelborth Res. 375-3205
Sales Associates:
Judy Schroeder, Wakefield, 287-2805.
Bill Woehler 375-4606

With interest rates as low as they have been in 10 years, this may be the time to obtain your dream home. You will be pleased with the lower payments. Homes available in Wakefield and Wayne. Please contact us for details.

NAME _____
ADDRESS _____

OPEN 7 DAYS A WEEK
SERVING LUNCH 11 A.M.-1 P.M.
• SALAD BAR
• NOON SPECIALS
Open Evenings Except Sunday Evening



BLACK KNIGHT RESTAURANT & LOUNGE

205 Main Wayne

NAME _____
ADDRESS _____



Merchant Oil Co.

Tires Mufflers Shocks Alignment

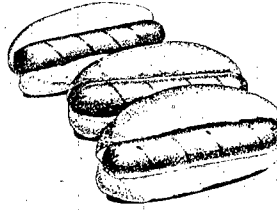


Automotive Service Farm Delivery For Your Fuel Needs On-The-Farm Tire Service

121 West First 375-3340

NAME _____
ADDRESS _____

Hot Dogs



3/\$1.00

Hardee's

Where good people go for good food.

602 Main St. — Wayne

NAME _____
ADDRESS _____



NAPA



Quality Parts At Competitive Prices

Everything You Need For The Farm, Tractor, Auto or Truck

Machine Shop Service Available

- Valve Grinding
- Head Work
- Glass Beading
- Hot Tank Cleaning
- Cylinder Boring

Starter and Alternator Repair

CARR AUTO & AG

North Hwy. 35 Wayne, NE
Phone 375-2683 or 375-2687

NAME _____
ADDRESS _____

